

## UPDATE: TRENDS IN SELECTED AGRICULTURAL INPUT PRICES August 2012

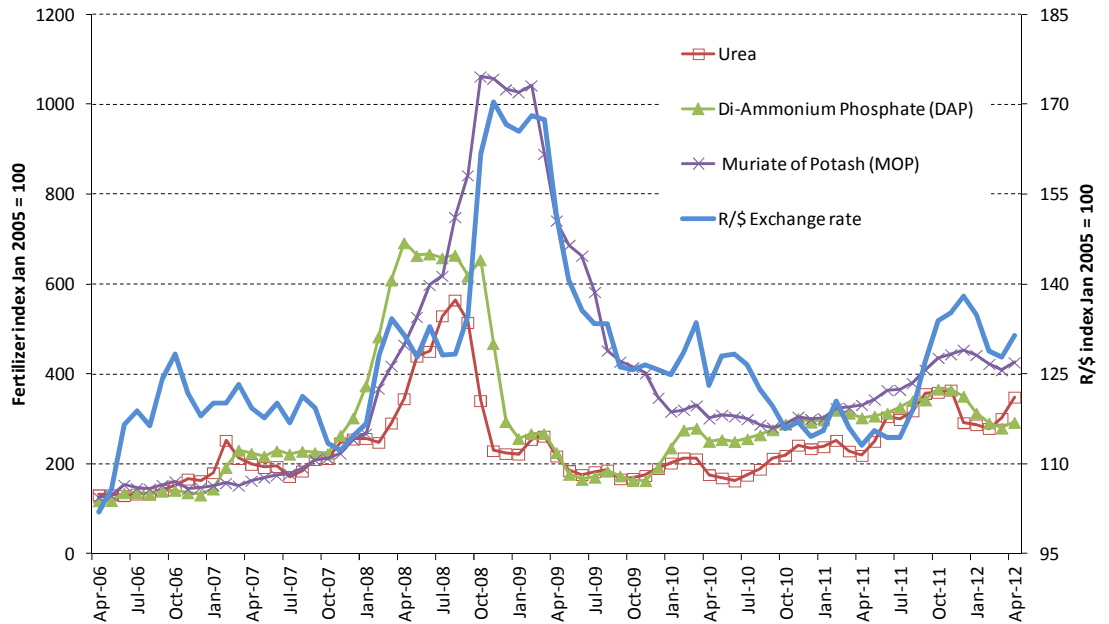
### International price trends for selected fertilisers:

Price trends for international fertilisers and R/\$ exchange rate from April 2006 to April 2012:

**Urea:** 165.6 % increase  
**DAP:** 148.5 % increase  
**MOP:** 238.1 % increase  
**R/\$:** 28.9 % depreciation

Price trends for international fertilisers and R/\$ exchange rate from April 2011 to April 2012:

**Urea:** 59.0 % increase  
**DAP:** 3.4 % decrease  
**MOP:** 28.5 % increase  
**R/\$:** 16.2 % depreciation



Source: Own calculations based on data from Grain SA, 2012.

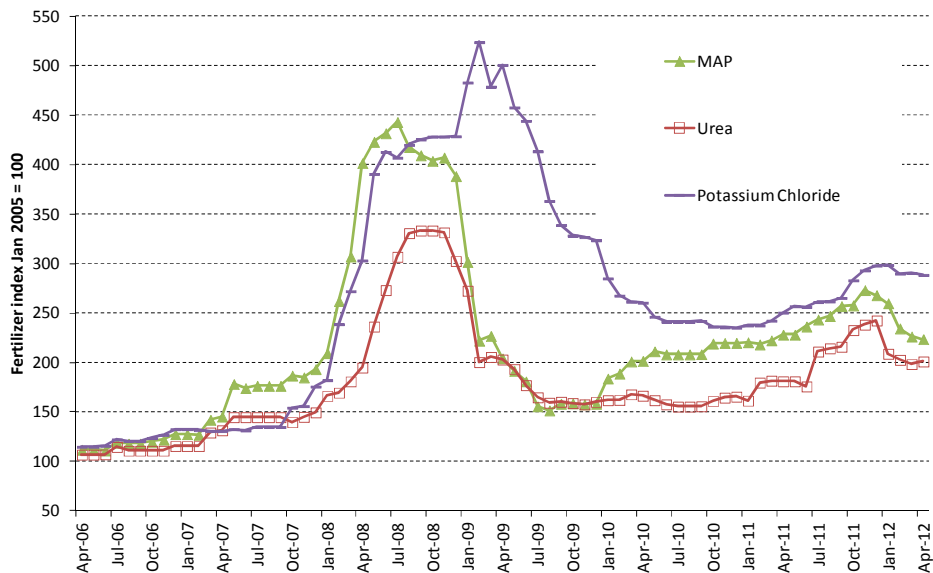
### Local price trends for selected fertilisers:

Price trends for local fertilisers from April 2006 to April 2012:

**MAP:** 99.7 % increase  
**Urea:** 88.0 % increase  
**Potassium chloride:** 151.1 % increase

Price trends for local fertilisers and grains from April 2011 to April 2012:

**MAP:** 2.0 % decrease  
**Urea:** 11.1 % increase  
**Potassium chloride:** 15.1 % increase



Source: Own calculations from price lists, 2012.

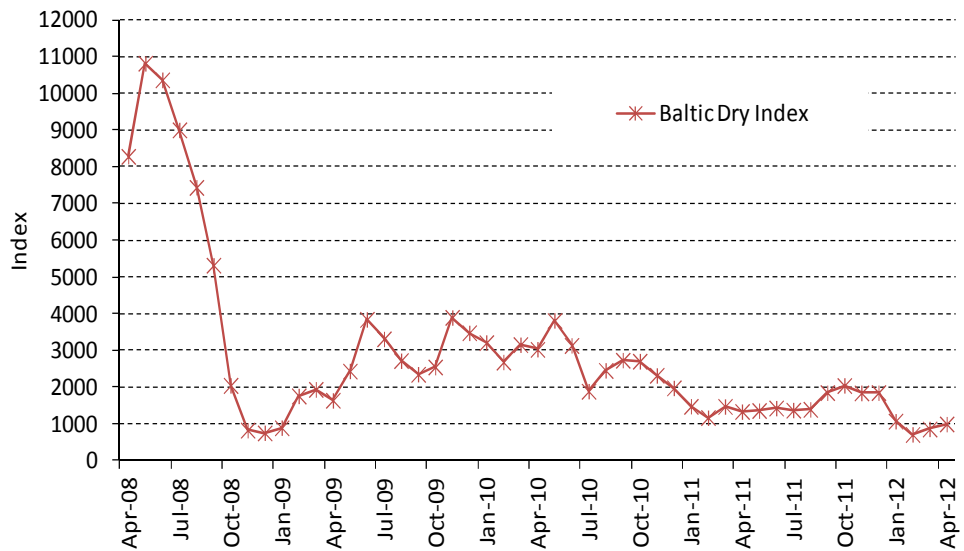
## Baltic Freight Index

Trends for Baltic Freight Index from April 2008 to April 2012:

Baltic Freight index: 88 % decrease

Trends for Baltic Freight Index from April 2011 to April 2012:

Baltic Freight index: 25.6 % decrease



Source: SAGIS, 2012.

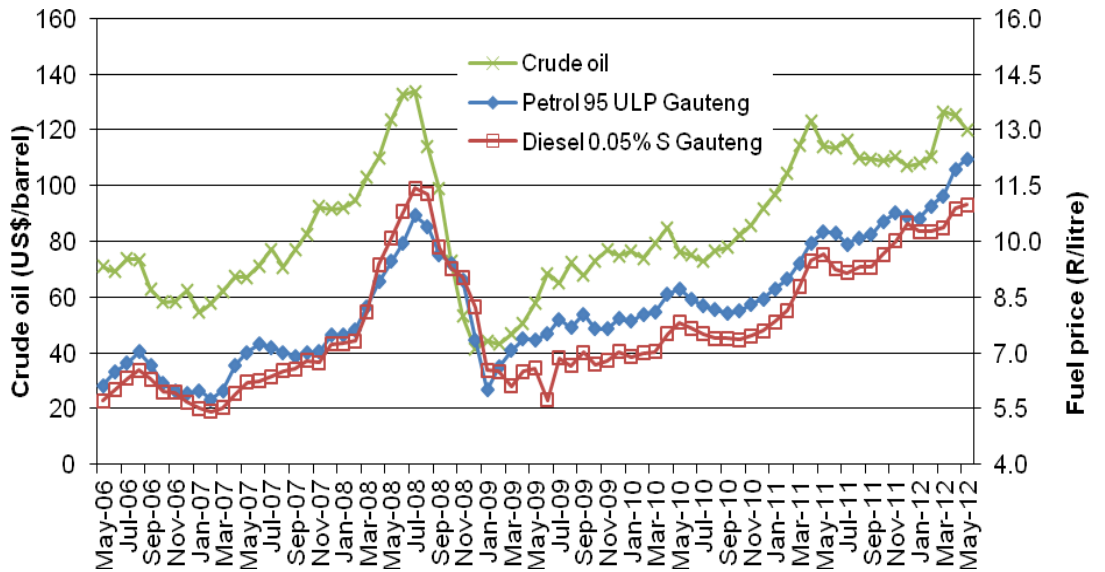
## Fuel prices

Price trends for Crude oil and fuel from May 2006 to May 2012:

Crude oil: 69.5 % increase  
 Petrol: 99.7 % increase  
 Diesel: 92.3 % increase

Price trends for Crude oil and fuel from May 2011 to May 2012:

Crude oil: 5.2 % increase  
 Petrol: 19.2 % increase  
 Diesel: 13.9 % increase



Source: Grain SA and SAPIA, 2012.

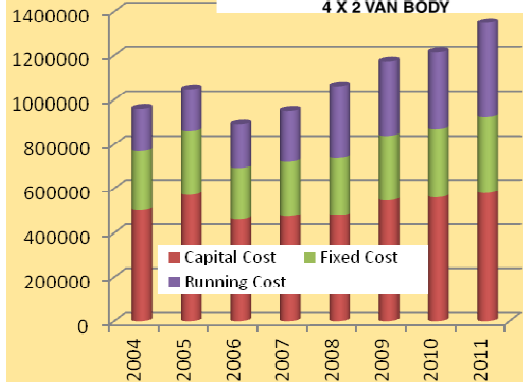
## Vehicle costs over time for different sized vehicles

1.1.

Rand



4 X 2 VAN BODY

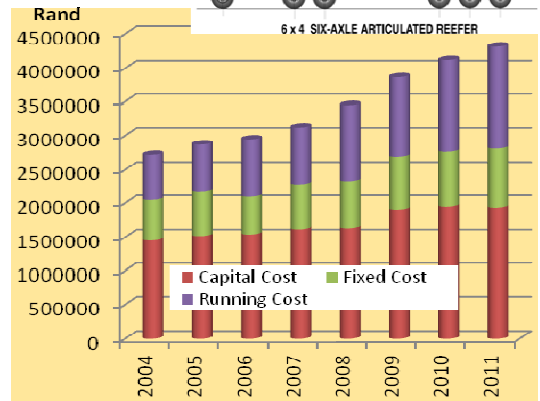


1.2.3.

Rand

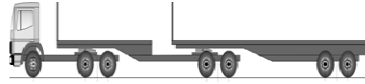


6 X 4 SIX-AXLE ARTICULATED REEFER

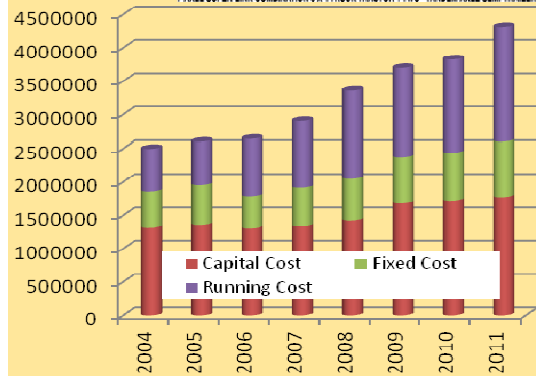


1.2.2.2.

Rand



7 AXLE SUPER-LINK COMBINATION 6 X 4 TRUCK TRACTOR - TWO - TANDEM AXLE SEMI-TRAILERS



Source: Max Braun Consulting Services, 2012.

Vehicle costs trends from 2004 to 2011:

2-axle vehicle

Capitol cost: 14.5 % increase

Fixed cost: 31.3 % increase

Running cost: 120.6 % increase

6-axle vehicle

Capitol cost: 32.9 % increase

Fixed cost: 47.2 % increase

Running cost: 126.5 % increase

7-axle vehicle

Capitol cost: 35.3 % increase

Fixed cost: 51.3 % increase

Running cost: 168.7 % increase

### Disclaimer:

Information contained in this document results from research funded wholly or in part by the NAMC, acting in good faith. Opinions, attitudes and points of view expressed herein do not necessarily reflect the official position or policies of the NAMC. The NAMC makes no claims, promises or guarantees about the accuracy, completeness or adequacy of the contents of this document and expressly disclaims liability for errors and omissions regarding the content thereof. No warranty of any kind, implied, expressed, or statutory, including but not limited to the warranties of non-infringement of third party rights, title, merchantability, fitness for a particular purpose or freedom from computer virus is given with respect to the contents of this document in hardcopy, electronic format or electronic links thereto. Reference made to any specific product, process, and service by trade name, trade mark, manufacturer or another commercial commodity or entity are for informational purposes only and do not constitute or imply approval, endorsement or favouring by the NAMC.