
Selected agricultural commodity, food and input price trends

By

André Jooste

16 July 2009

Presentation at CGCSA breakfast meeting

Contributions from the following NAMC staff are acknowledged:
Nkgasha Tema, Corné Dempers



National Agricultural
Marketing Council

Strategic positioning of South African Agriculture 1
in dynamic global markets

Purpose of presentation

- To provide an overview of price trends as requested by CGCSA

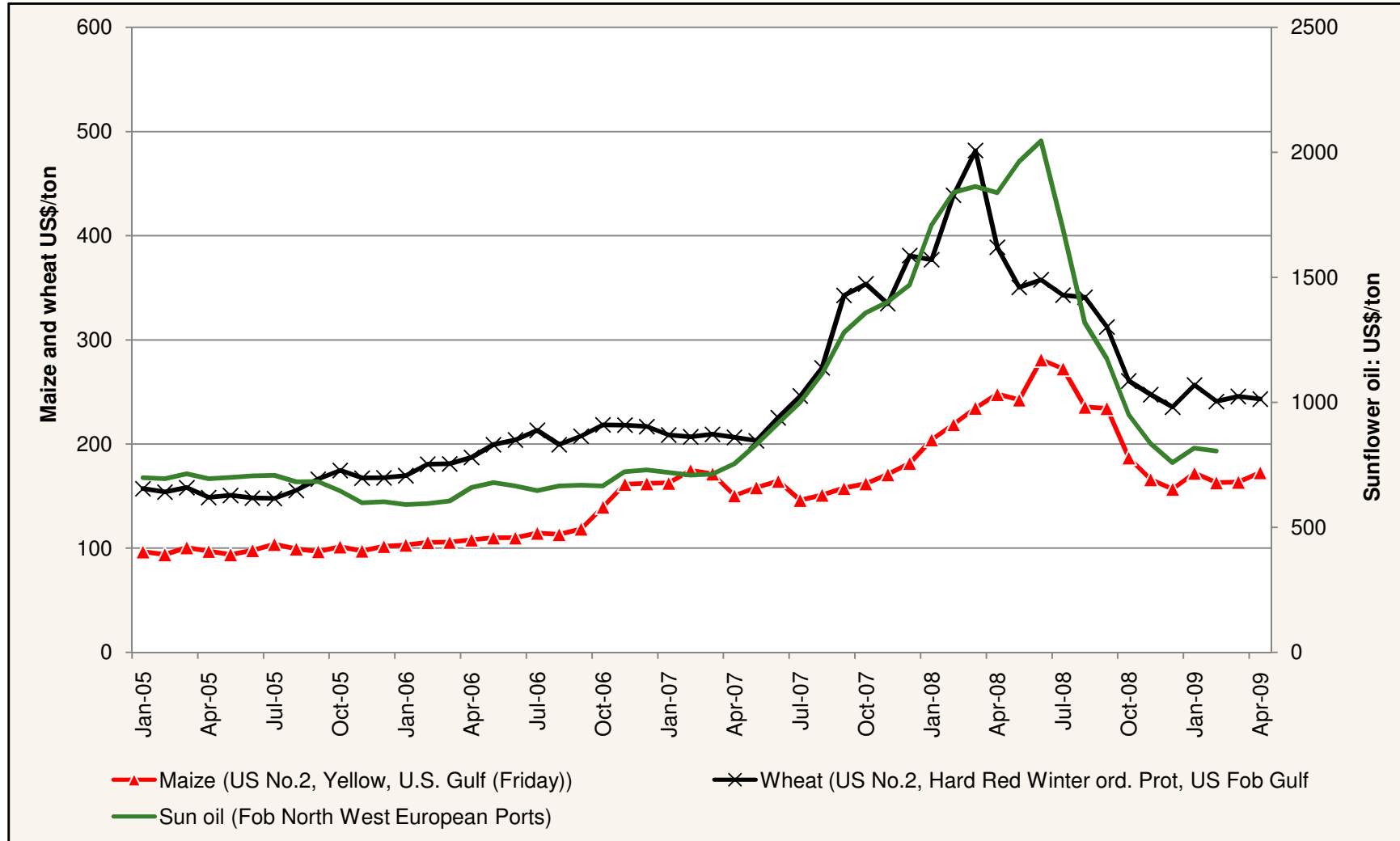
Commodity and food price trends

International food prices



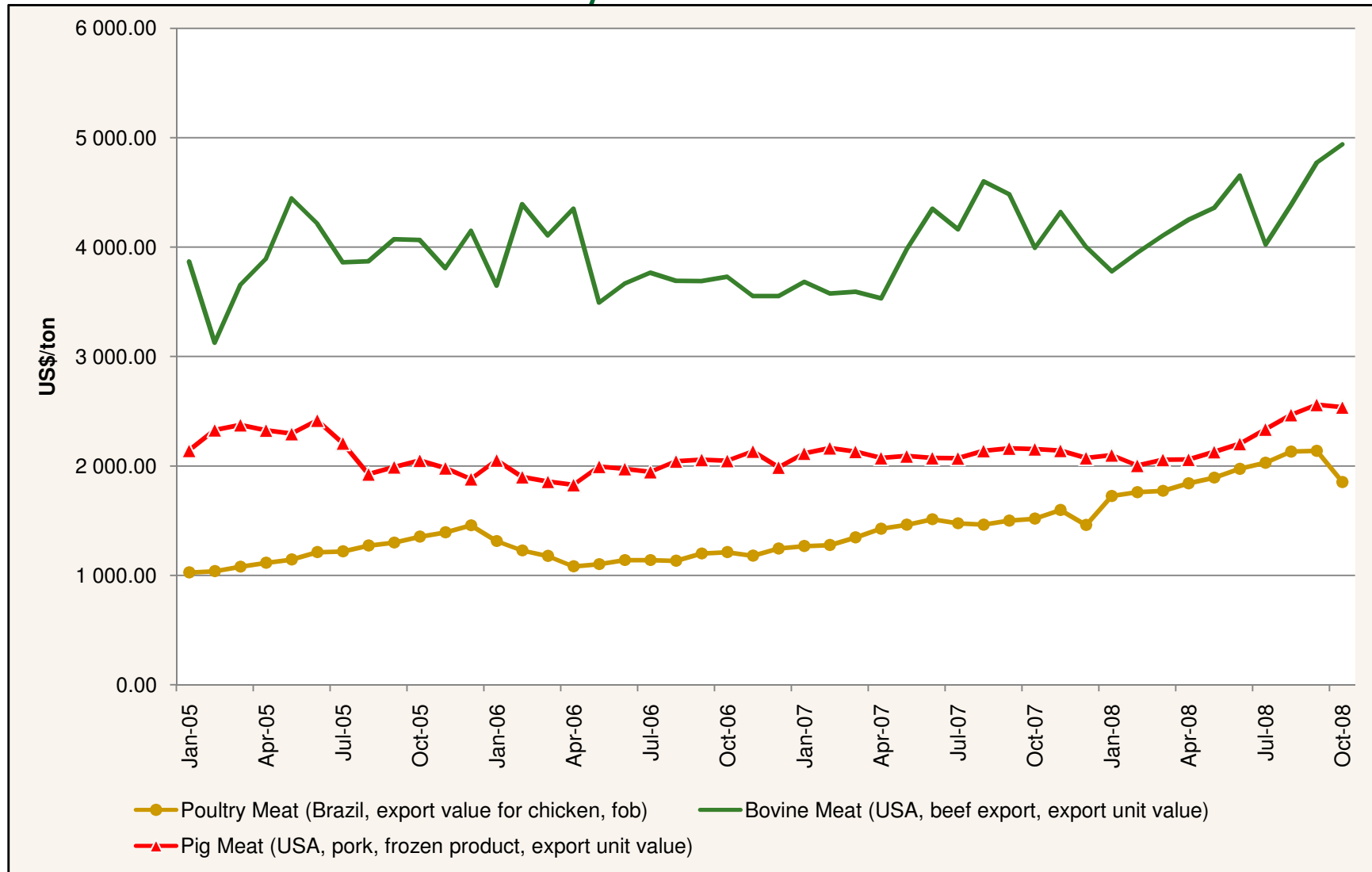
Source: FAO, 2009.

International grain price trends



Source: FAO, 2009.

International meat price trends

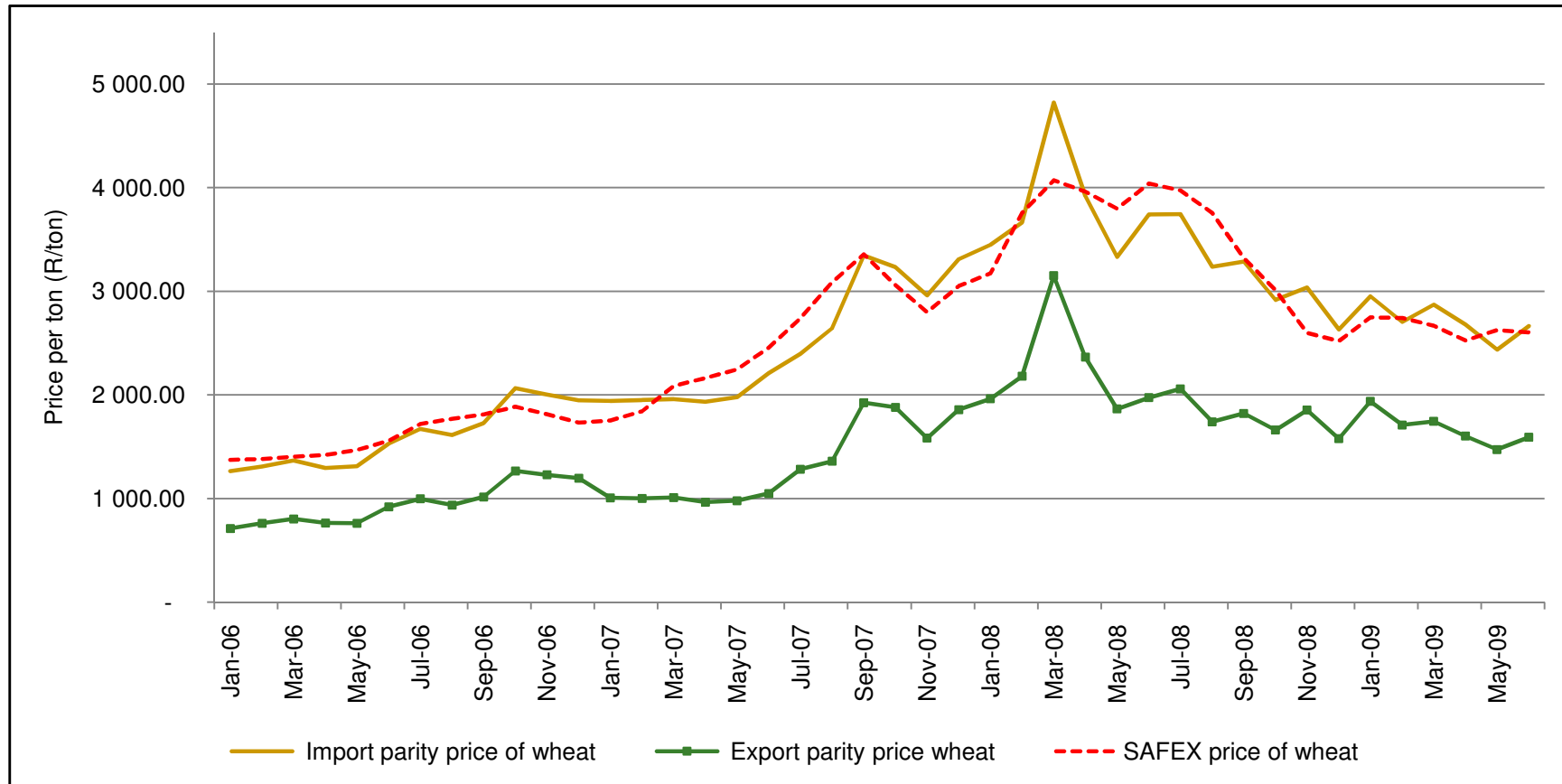


Source: FAO, 2009.

Domestic trends

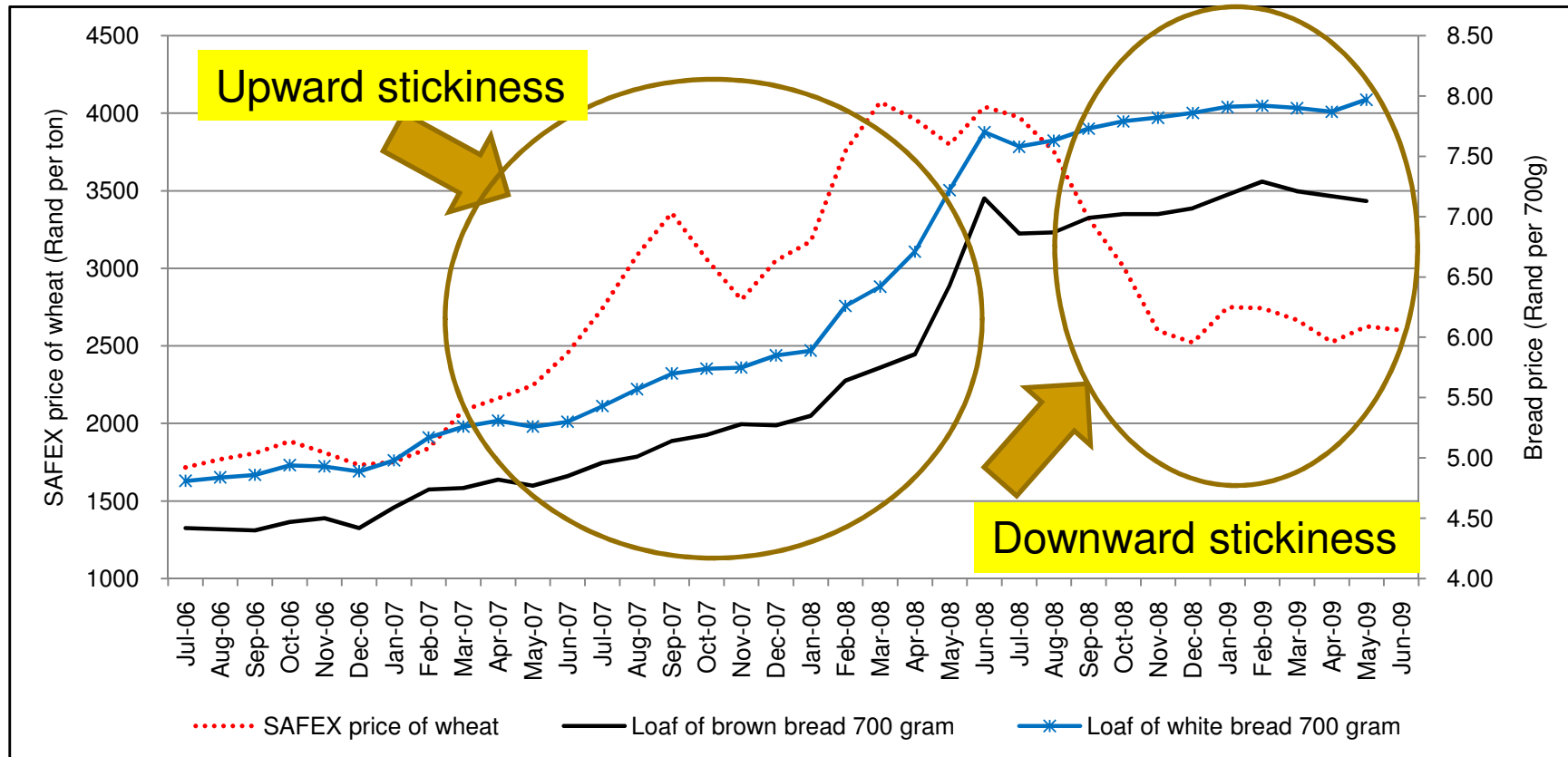
Note: Information used in this section was obtained from Stats SA, AC Nielsen, SAFEX and producer organisations

1.1 SAFEX, import parity and export parity prices of wheat



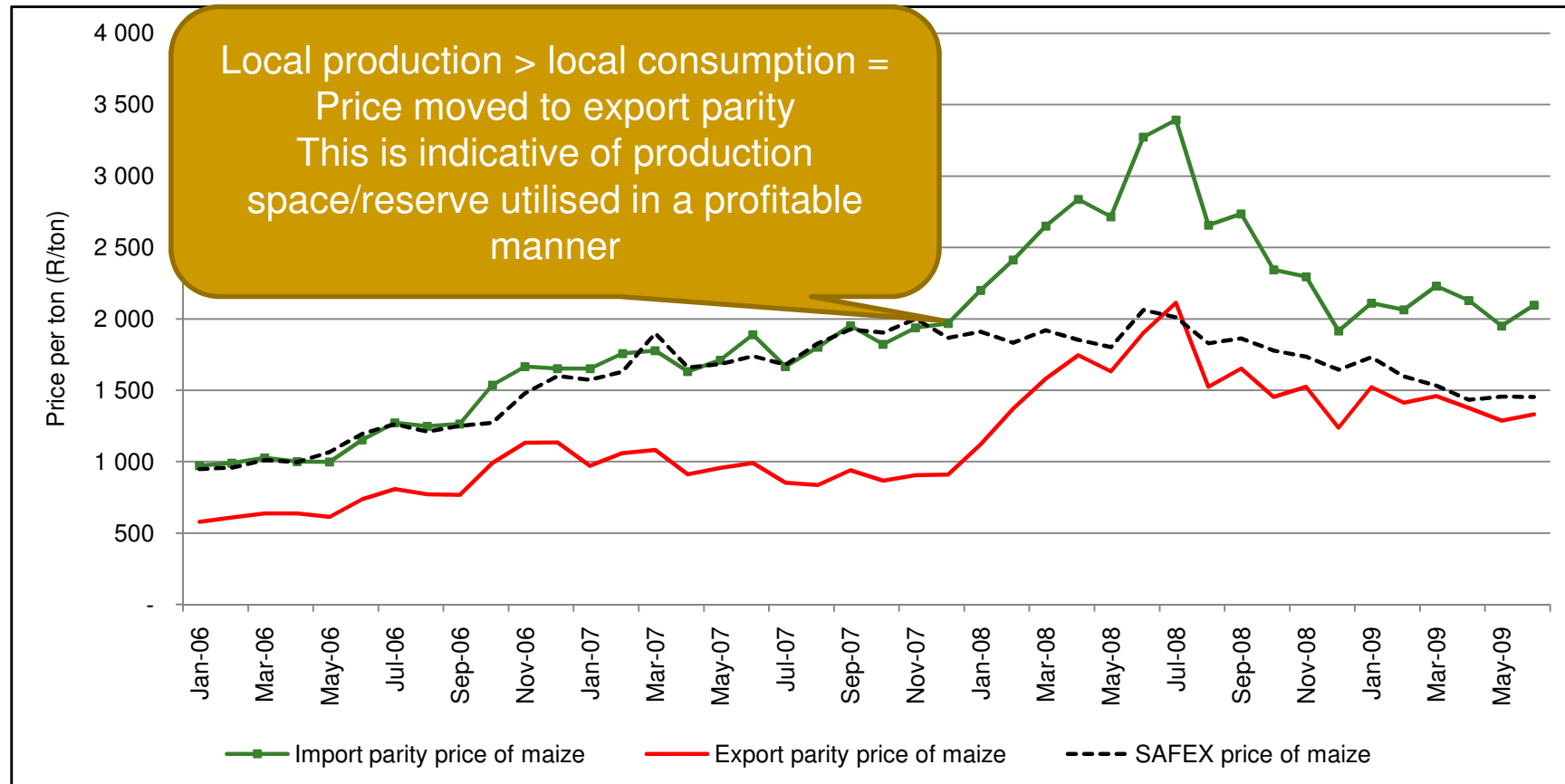
	Jun-08	Mar-09	Jun-09	Mar-09 to Jun-09	Jun-08 to Jun-09
Import parity price of wheat	3,741.67	2,869.96	2,664.81	-7%	-29%
Export parity price wheat	1,973.45	1,744.16	1,591.34	-9%	-19%
SAFEX price of wheat	4,041.35	2,666.95	2,603.24	-2%	-36%

1.2 Bread price versus wheat price



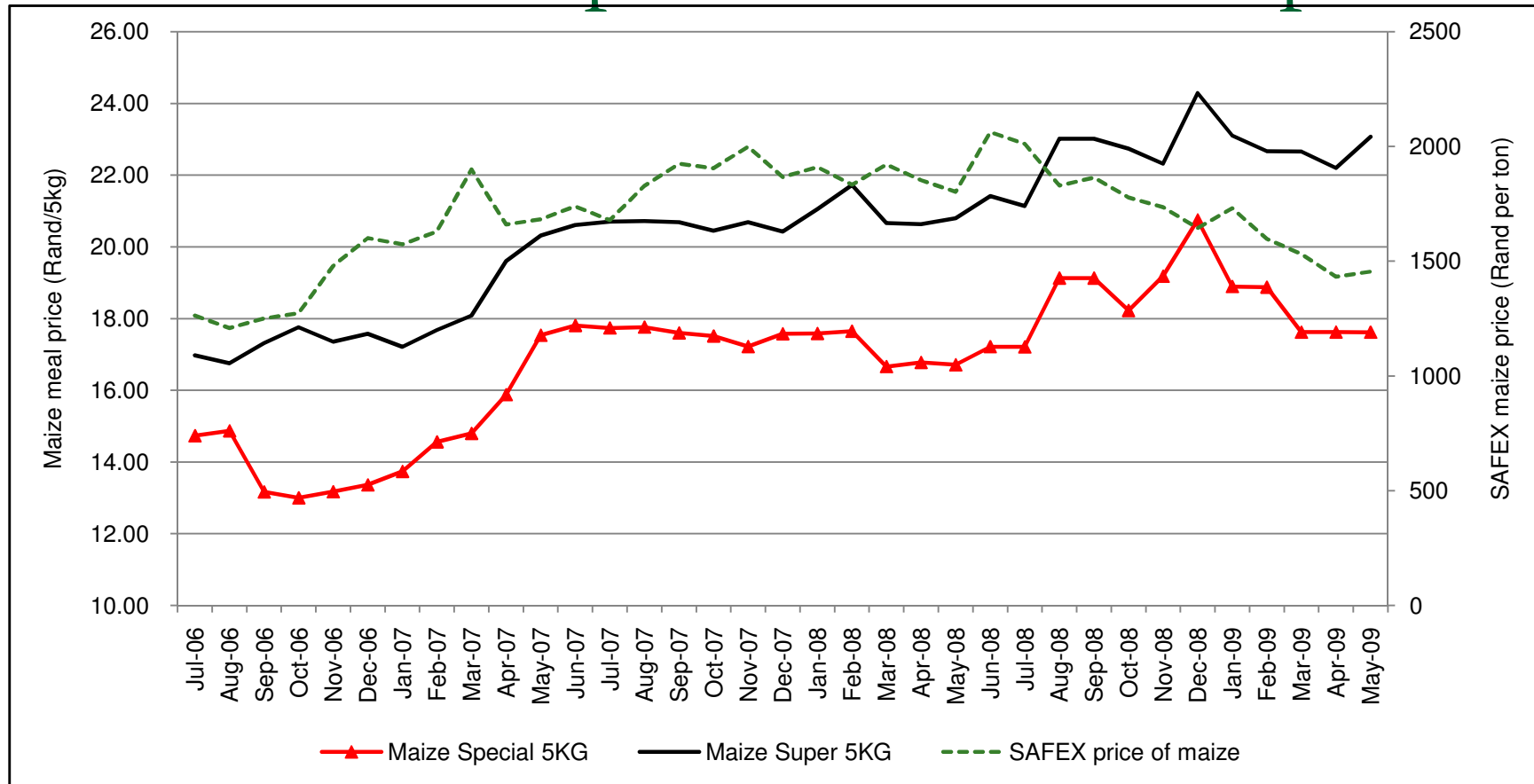
	May-08	Mar-09	May-09	Mar-09 to May-09	May -08 to May-09
Loaf of brown bread 700 gram	6.43	7.21	7.13	-1.1%	10.9%
Loaf of white bread 700 gram	7.22	7.90	7.97	0.9%	10.4%
Average				-0.1%	10.6%

1.3 SAFEX, import parity and export parity prices of maize



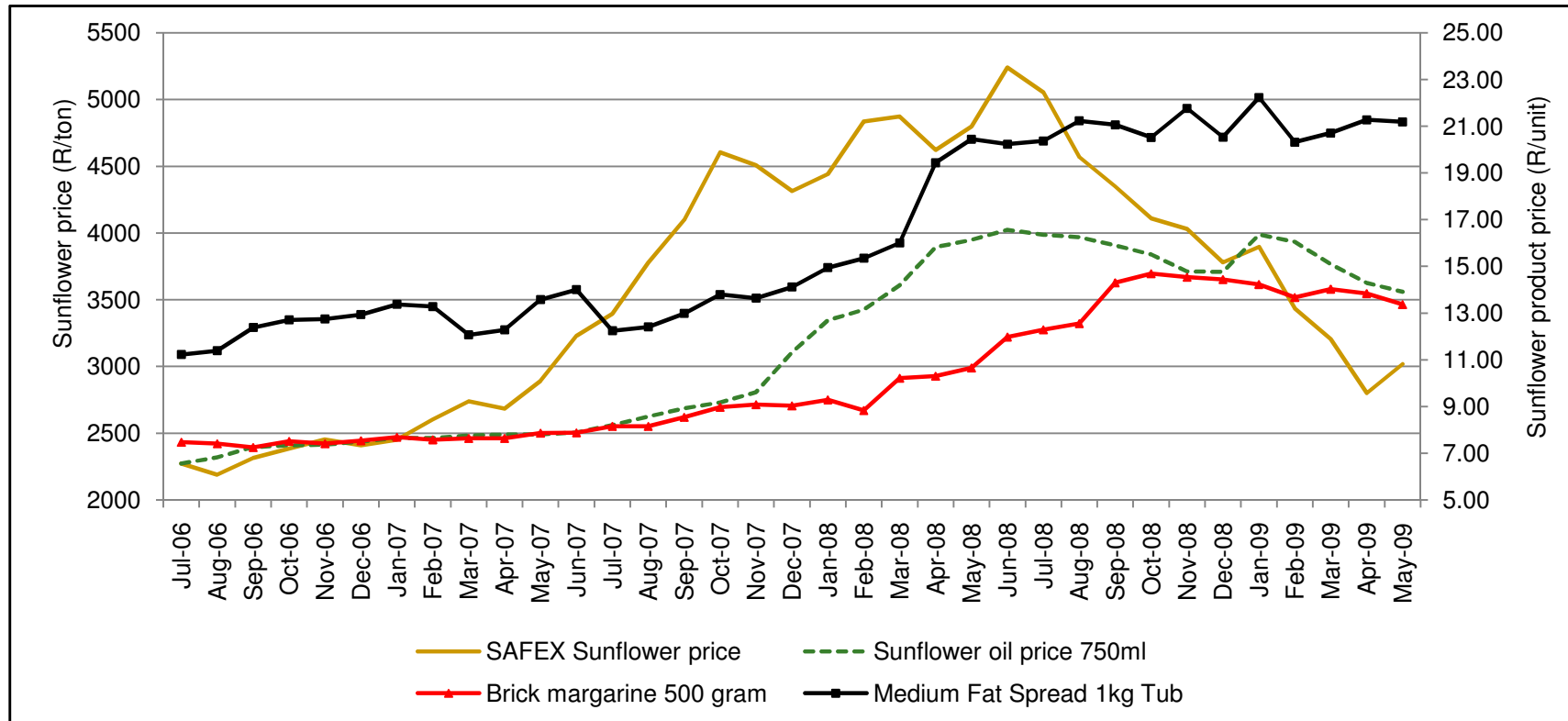
	Jun-08	Mar-09	Jun-09	Mar-09 to Jun-09	Jun-08 to Jun-09
Import parity price of maize	3,271.50	2,229.33	2,094.41	-6.1%	-36.0%
Export parity price of maize	1,900.99	1,458.75	1,331.43	-8.7%	-30.0%
SAFEX price of maize	2,061.45	1,531.45	1,452.19	-5.2%	-29.6%

1.4 Maize meal price versus maize price



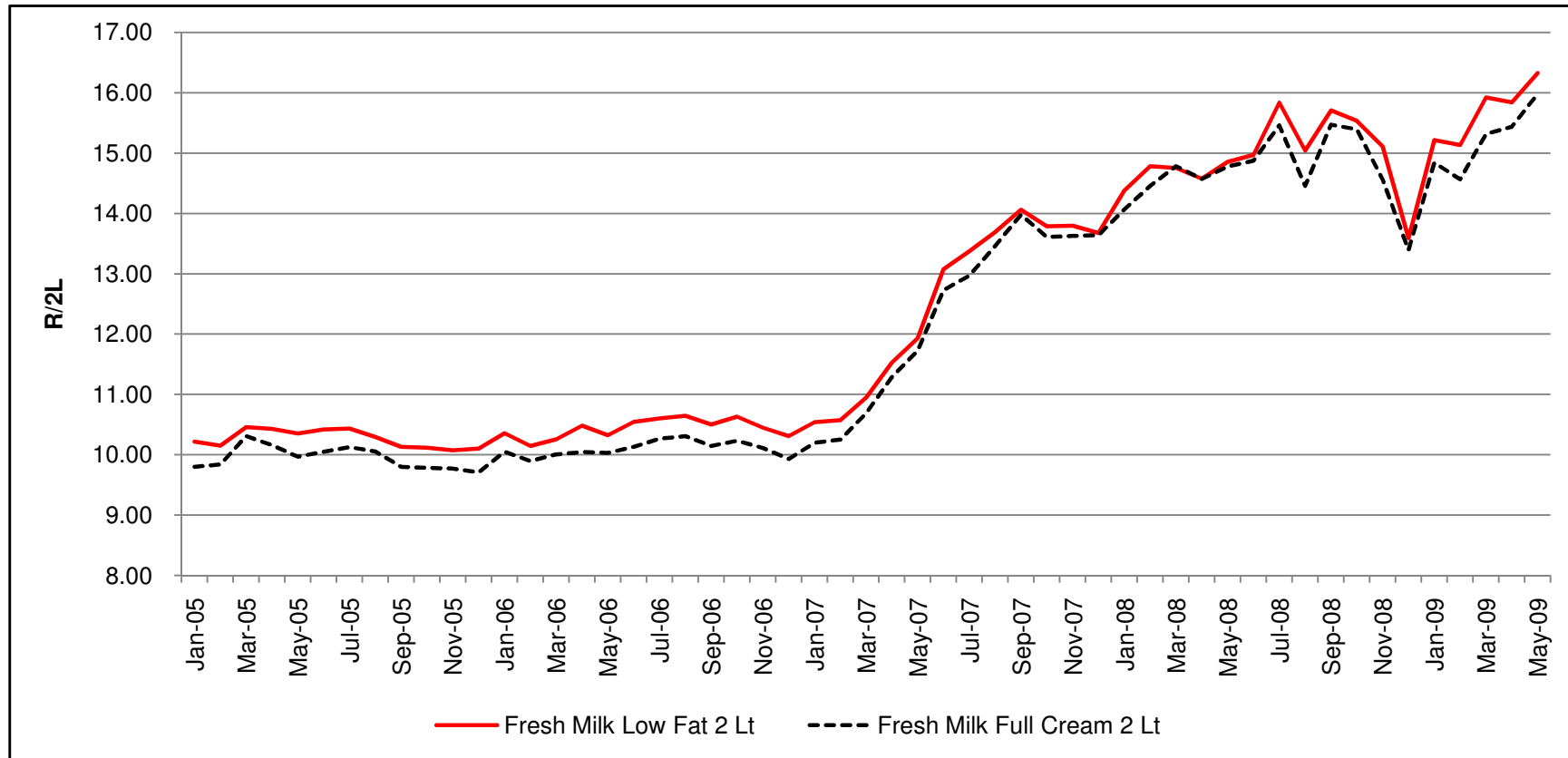
	May-08	Mar-09	May-09	Mar-09 to May-09	May -08 to May-09
Maize Special 5KG	16.71	17.62	17.62	0.0%	5.4%
Maize Super 5KG	20.79	22.66	23.07	1.8%	10.9%
Average				0.9%	8.2%

1.5 Sunflower & sunflower products price trends



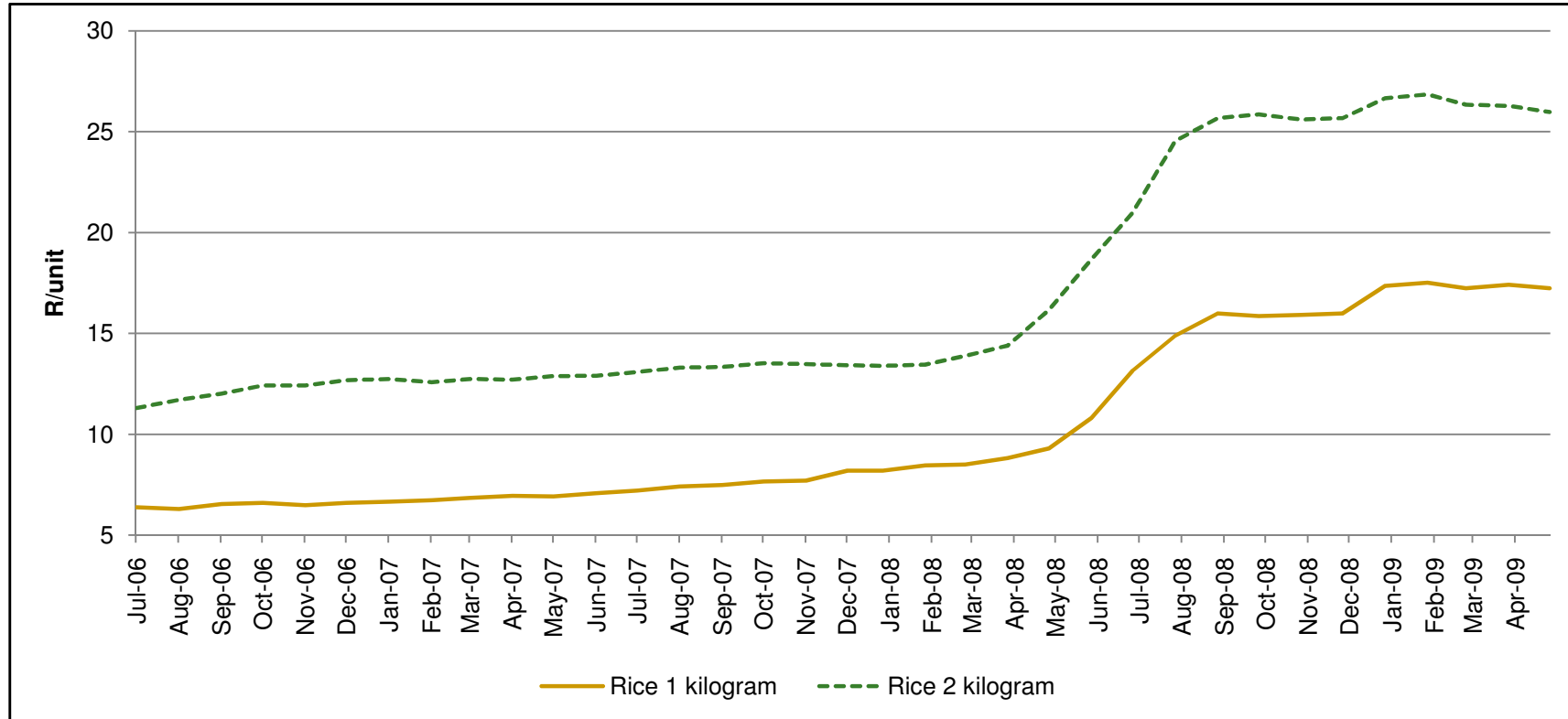
	May-08	Mar-09	May-09	Mar-09 to May -09	May-08 to May-09
SAFEX Sunflower price	4798.95	3206.91	3018.35	-5.9%	-37.1%
Sunflower oil price 750ml	16.14	15.10	13.92	-7.8%	-13.8%
Brick margarine 500 gram	10.65	14.03	13.37	-4.7%	25.5%
Medium Fat Spread 1kg Tub	20.45	20.71	21.18	2.3%	3.6%

1.6 Milk prices



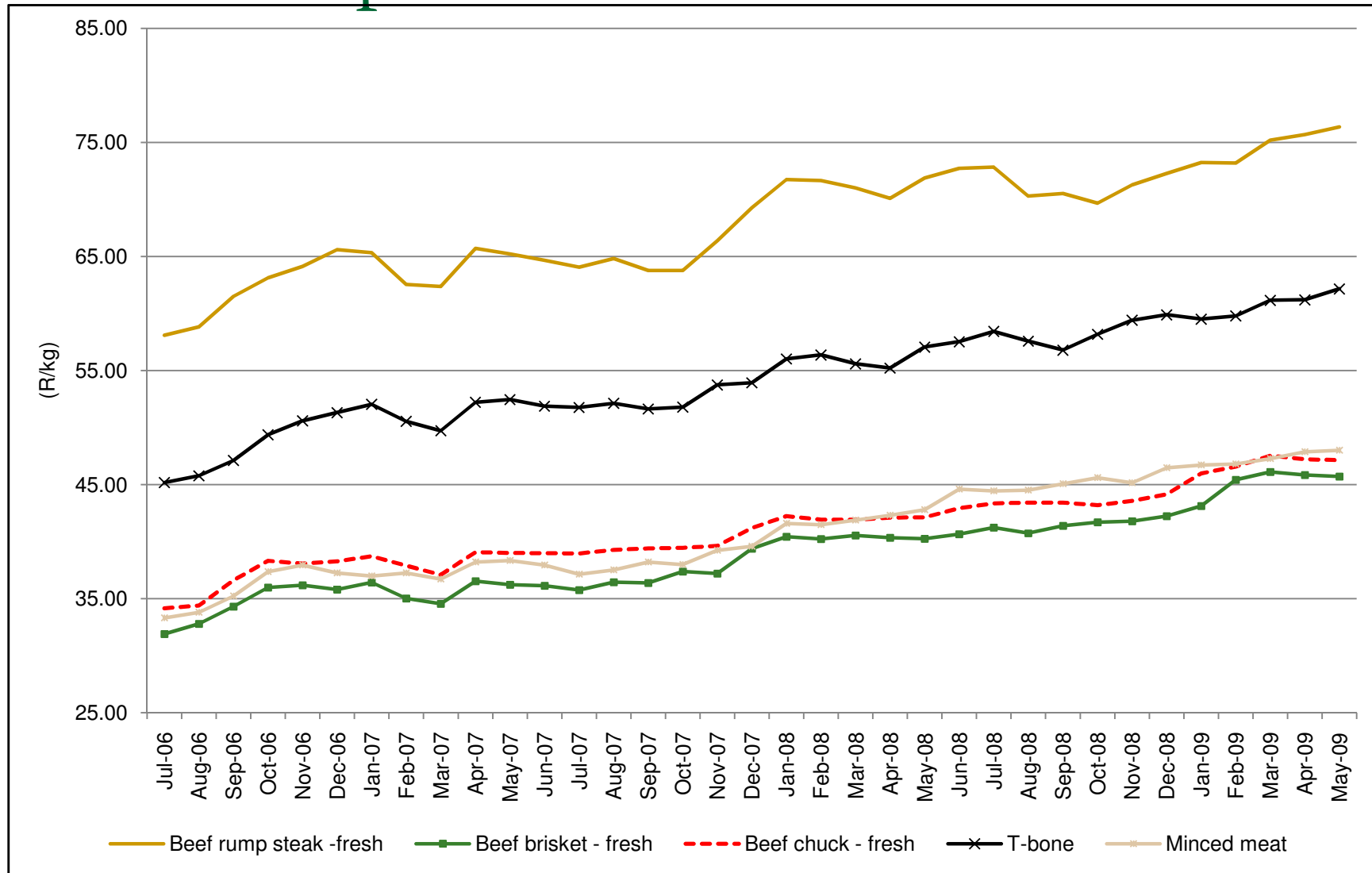
	May-08	Mar-09	May-09	Mar-09 to May-09	May-08 to May-09
Fresh Milk Low Fat 2 Lt	14.85	15.92	16.32	2.5%	9.9%
Fresh Milk Full Cream 2 Lt	14.78	15.32	15.98	4.3%	8.1%
Average				3.4%	9.0%

1.7 Rice price trends



	May-08	Mar-09	May-09	Mar-09 to May-09	May-09 to May-09
Rice 1 kilogram	9.31	17.25	17.25	0.0%	85.3%
Rice 2 kilogram	16.17	26.33	25.97	-1.4%	60.6%
Average				-0.7%	72.9%

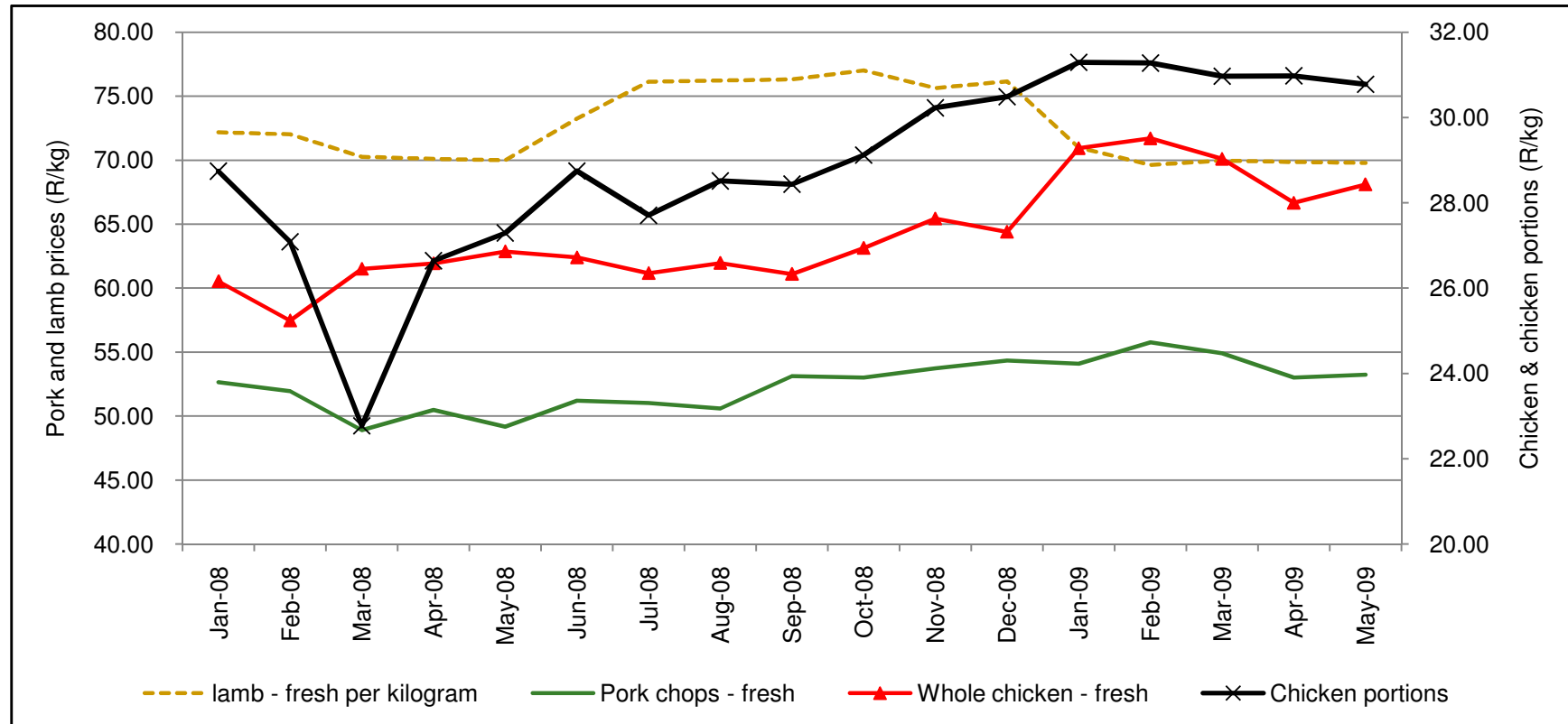
1.8 Beef price trends



1.8 Beef price trends continued

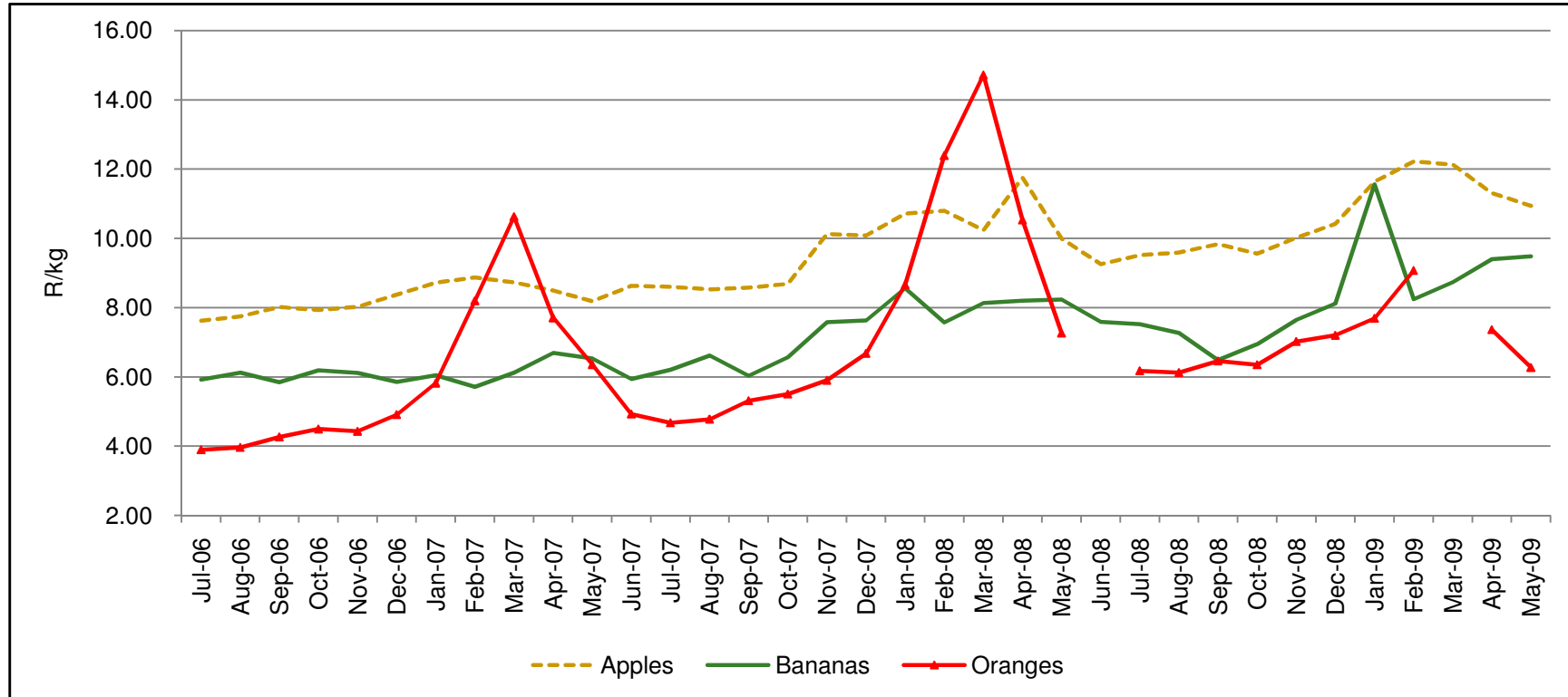
	May-08	Mar-09	May-09	Mar-09 to May-09	May-08 to May-09
Beef rump steak -fresh	71.89	75.21	76.36	1.5%	6.2%
Beef brisket - fresh	40.24	46.11	45.71	-0.9%	13.6%
Beef chuck - fresh	42.12	47.53	47.12	-0.9%	11.9%
T-bone	57.06	61.16	62.16	1.6%	8.9%
Minced meat	42.81	47.27	48.01	1.6%	12.1%
Average				0.6%	10.6%

1.9 Other meat



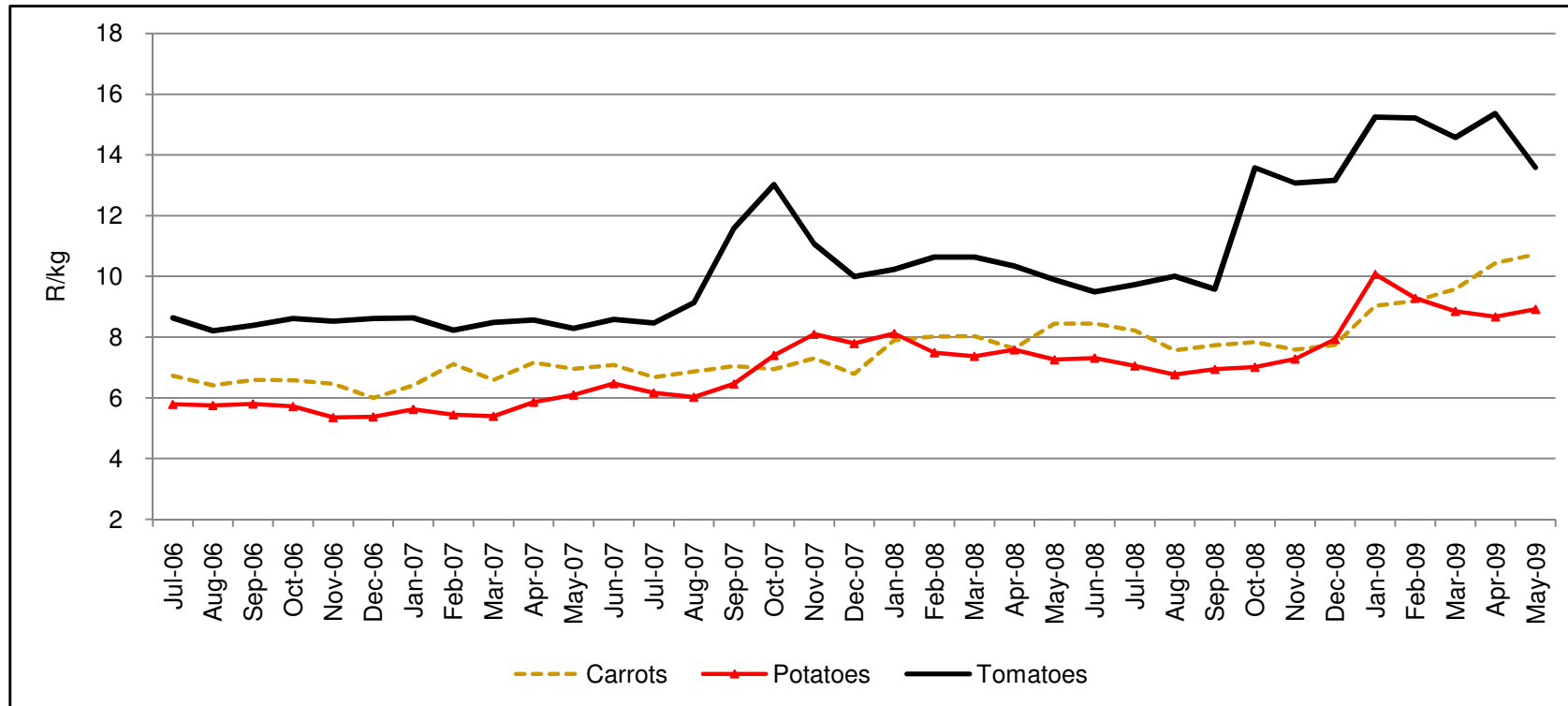
	May-08	Mar-09	May-09	Mar-09 to May-09	May-08 to May-09
Lamb - fresh per kilogram	69.98	69.96	69.78	-0.3%	-0.3%
Pork chops - fresh	49.19	54.90	53.23	-3.0%	8.2%
Whole chicken - fresh	26.86	29.03	28.43	-2.1%	5.8%
Chicken portions	27.29	30.97	30.78	-0.6%	12.8%
Average				-1.5%	6.6%

1.10 Fruits



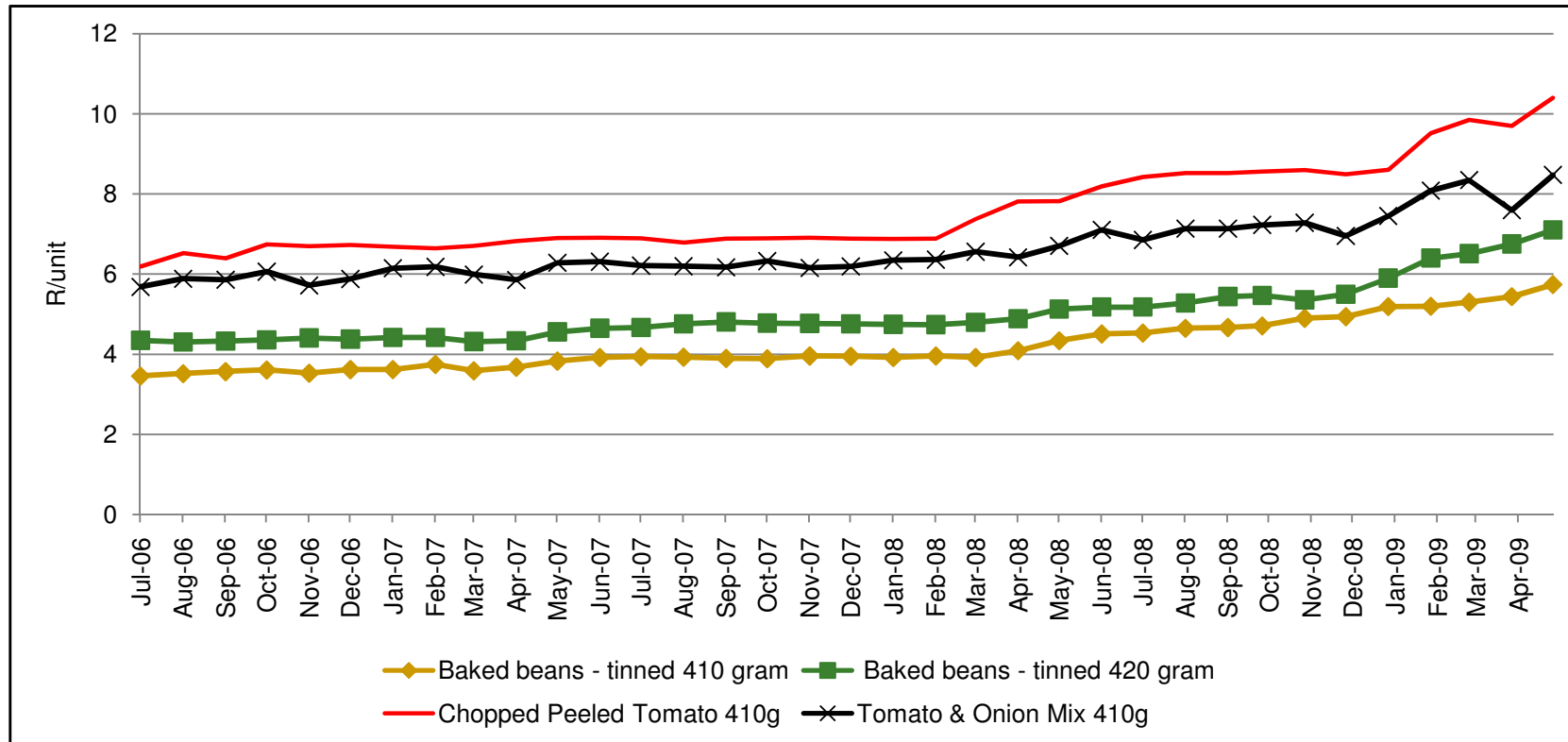
	May-08	Mar-09	May-09	Mar-09 to May-09	May-08 to May-09
Apples	9.99	12.13	10.94	-9.8%	9.5%
Bananas	8.23	8.74	9.48	8.5%	15.2%
Oranges	7.26	-	6.27	-	-13.6%
Average				-0.7%	3.7%

1.11 Vegetables



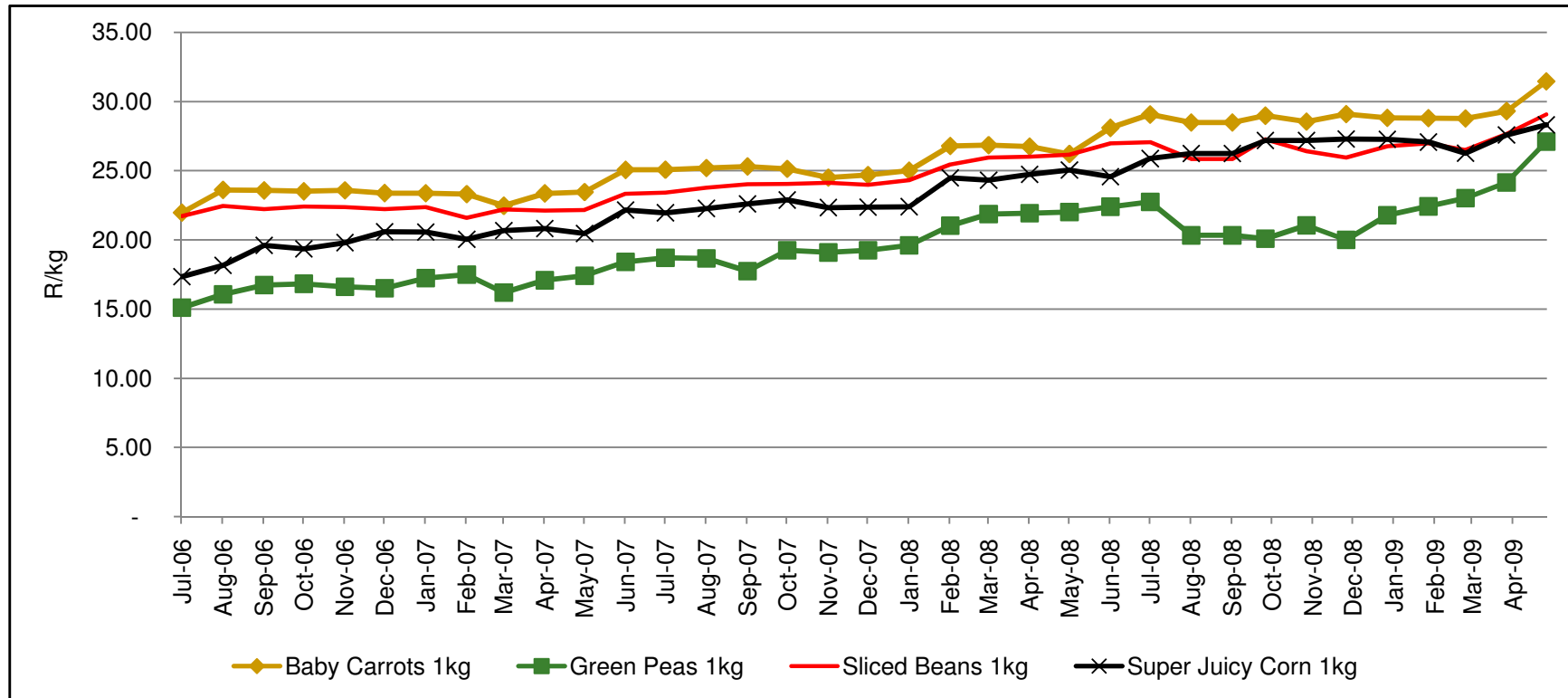
	May-08	Mar-09	May-09	Mar-09 to May-09	May-08 to May-09
Carrots	8.44	9.58	10.72	0.12	27.0%
Onions	6.89	7.45	9.37	0.26	36.0%
Potatoes	7.26	8.85	8.92	0.01	22.9%
Tomatoes	9.88	14.57	13.58	-0.07	37.4%
Average				7.9%	30.8%

1.12 Processed vegetables



	May-08	Mar-09	May-09	Mar-09 to May-09	May-08 to May-09
Baked beans - tinned 410 gram	4.34	5.30	5.74	8%	32%
Baked beans - tinned 420 gram	5.13	6.51	7.10	9%	38%
Chopped Peeled Tomato 410g	7.82	9.86	10.40	6%	33%
Tomato & Onion Mix 410g	6.71	8.35	8.47	1%	26%
Average				6%	33%

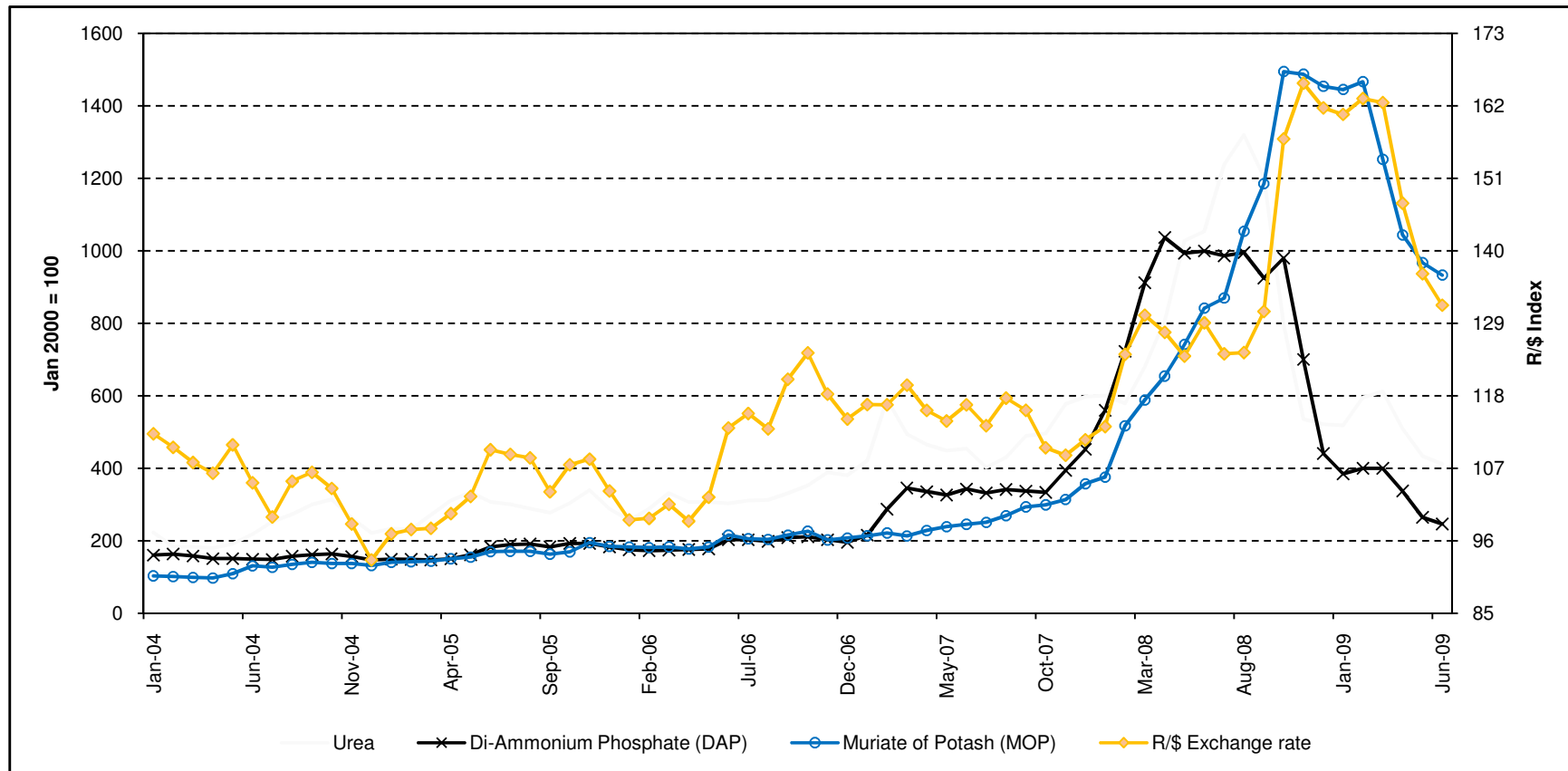
1.13 Processed vegetables con.



	May-08	Mar-09	May-09	Mar-09 to May-09	May-08 to May-09
Baby Carrots 1kg	26.20	28.77	31.45	9%	20%
Green Peas 1kg	22.01	23.03	27.10	18%	23%
Sliced Beans 1kg	26.17	26.49	29.08	10%	11%
Super Juicy Corn 1kg	25.05	26.27	28.32	8%	13%
Average				11%	17%

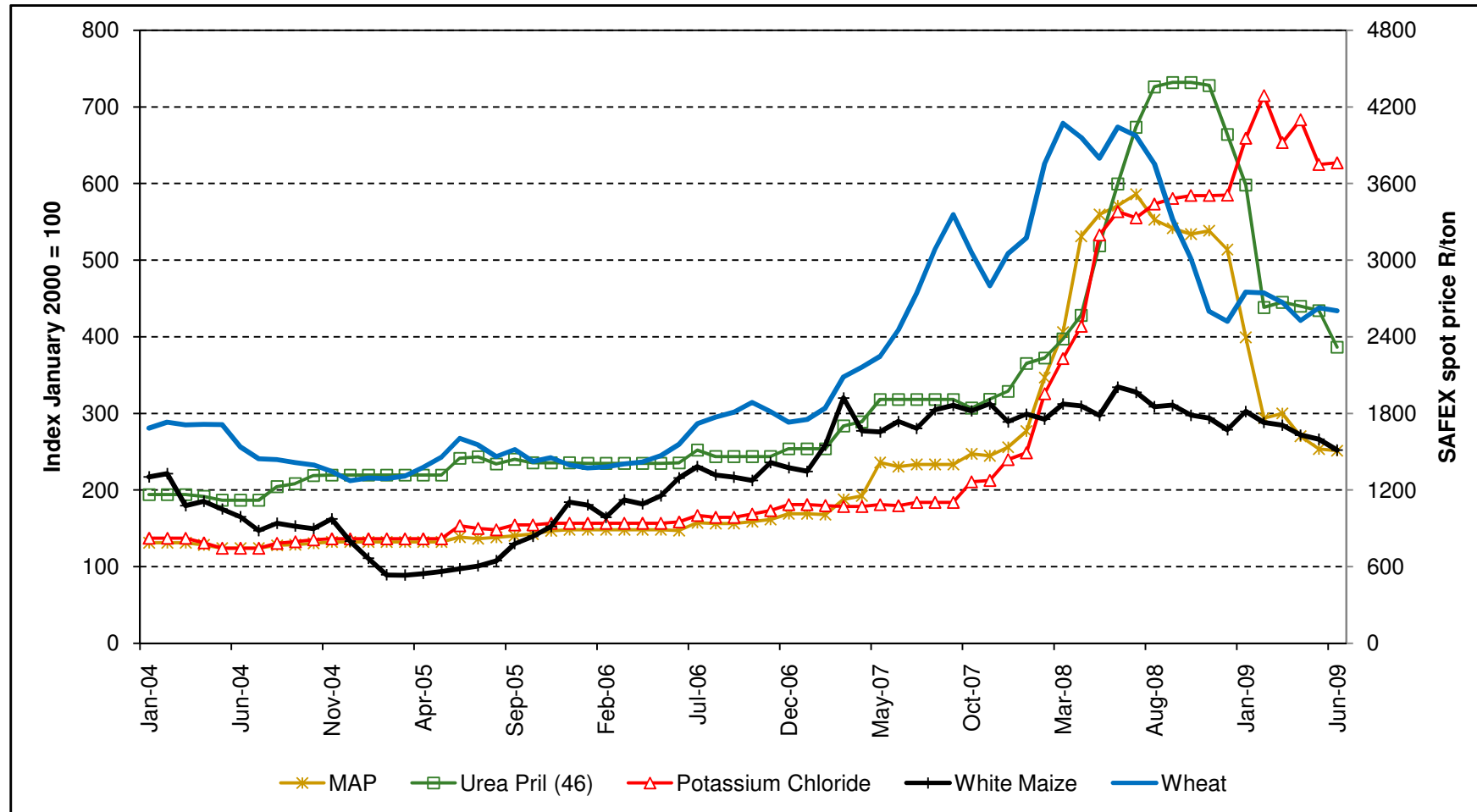
Input cost trends

International input prices



Source: Grain SA, 2009

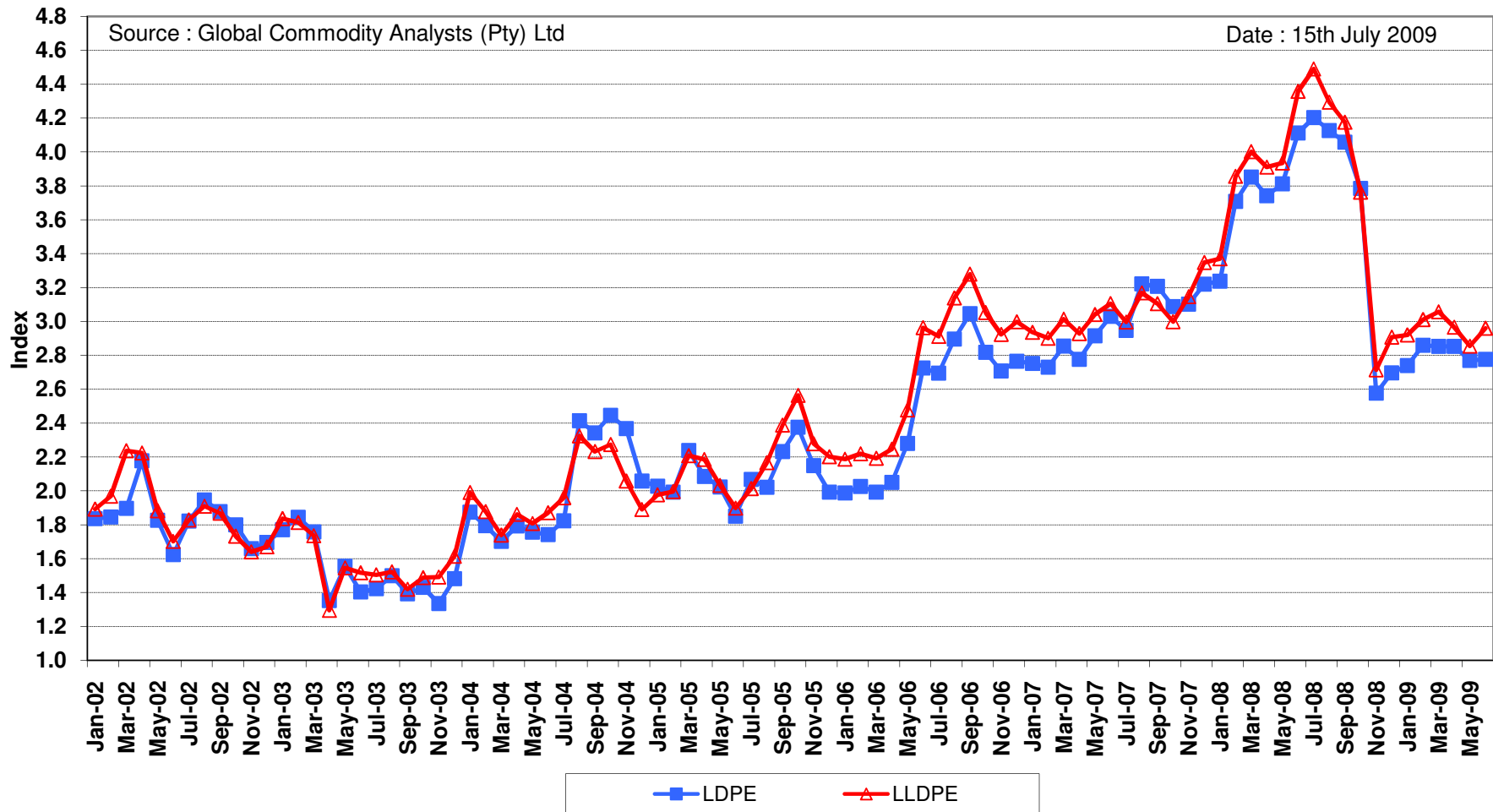
National input prices



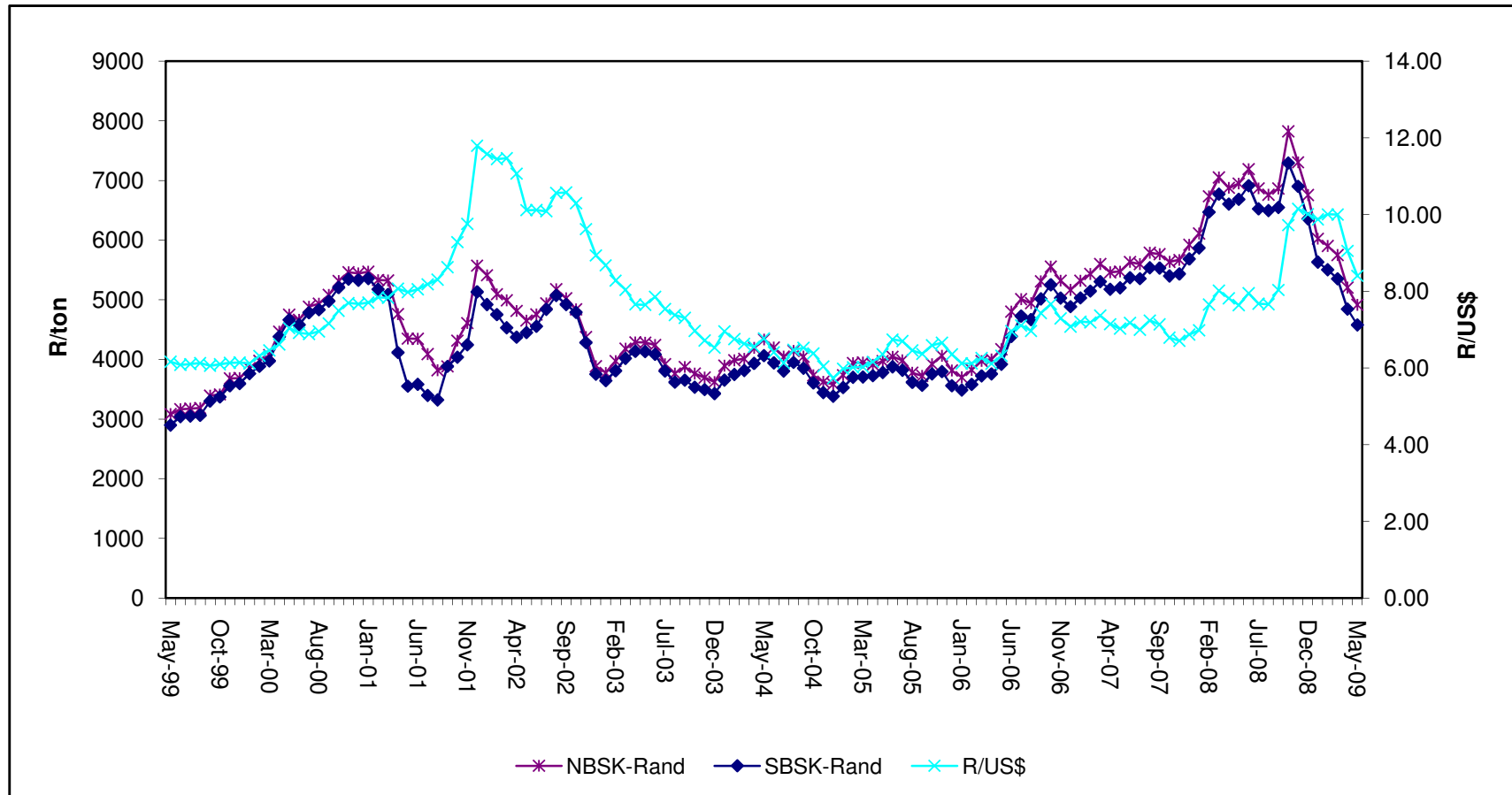
Source: Input prices indices from price lists, 2009 and commodity prices from SAFEX.

LDPE and LLDPE South African Price Indices : 2002 - 2008

Base: August 1998 = 1.000



NBSK-Rand and SBSK-Rand pulp prices

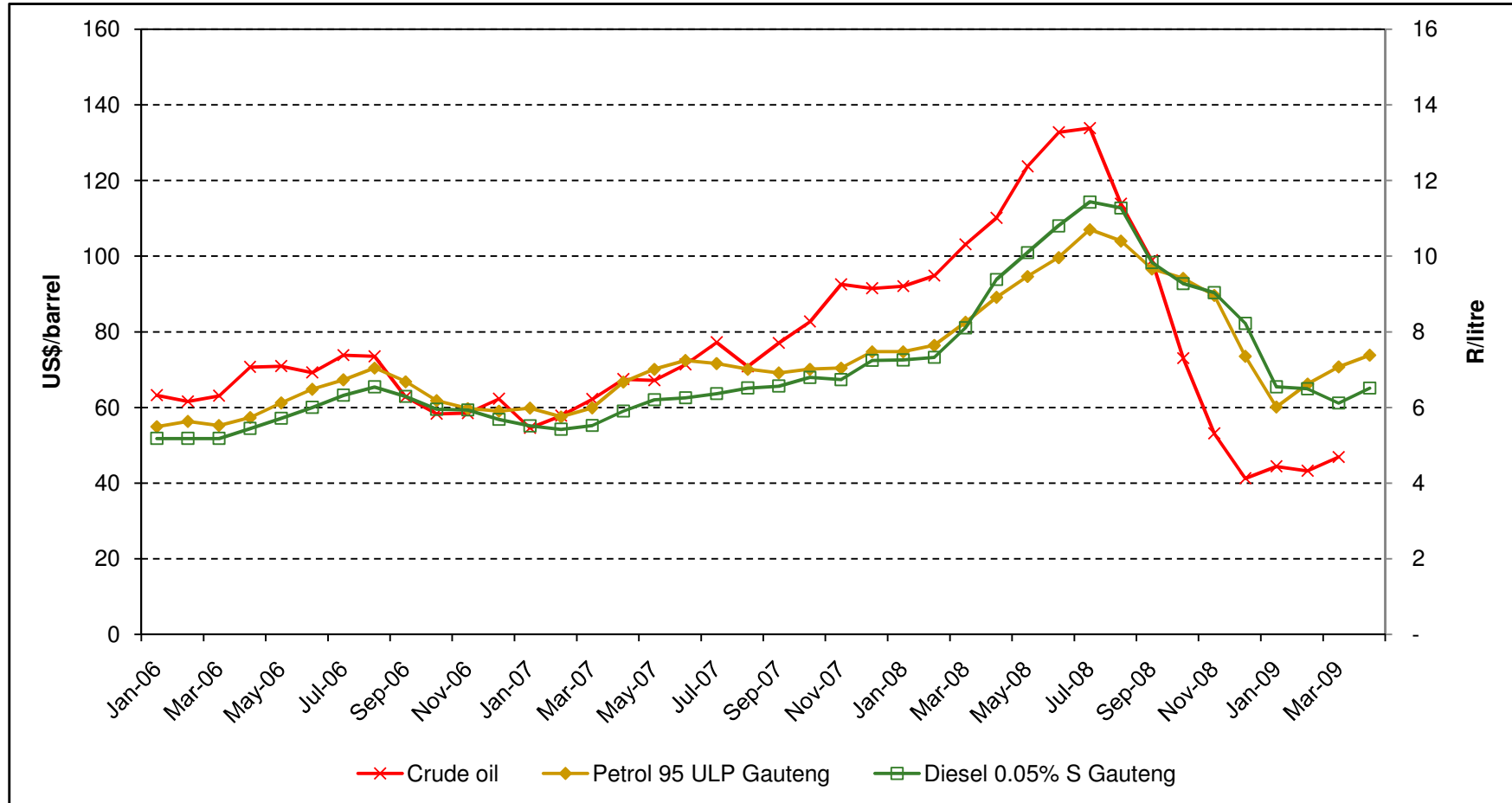


Source: SAPPI, 2009

Tinplate prices

- April 2008
 - \$1 029 per ton
 - R7 511 per ton
- November 2008
 - \$1 600 per ton
 - R16 000 per ton
- January 2009
 - \$1 259 per ton
 - R12 590 per ton
- Nearly 70% increase in tinplate prices
- Prices derived internationally and the exchange rate
- Contracting period changed

Brent crude oil vs. Fuel



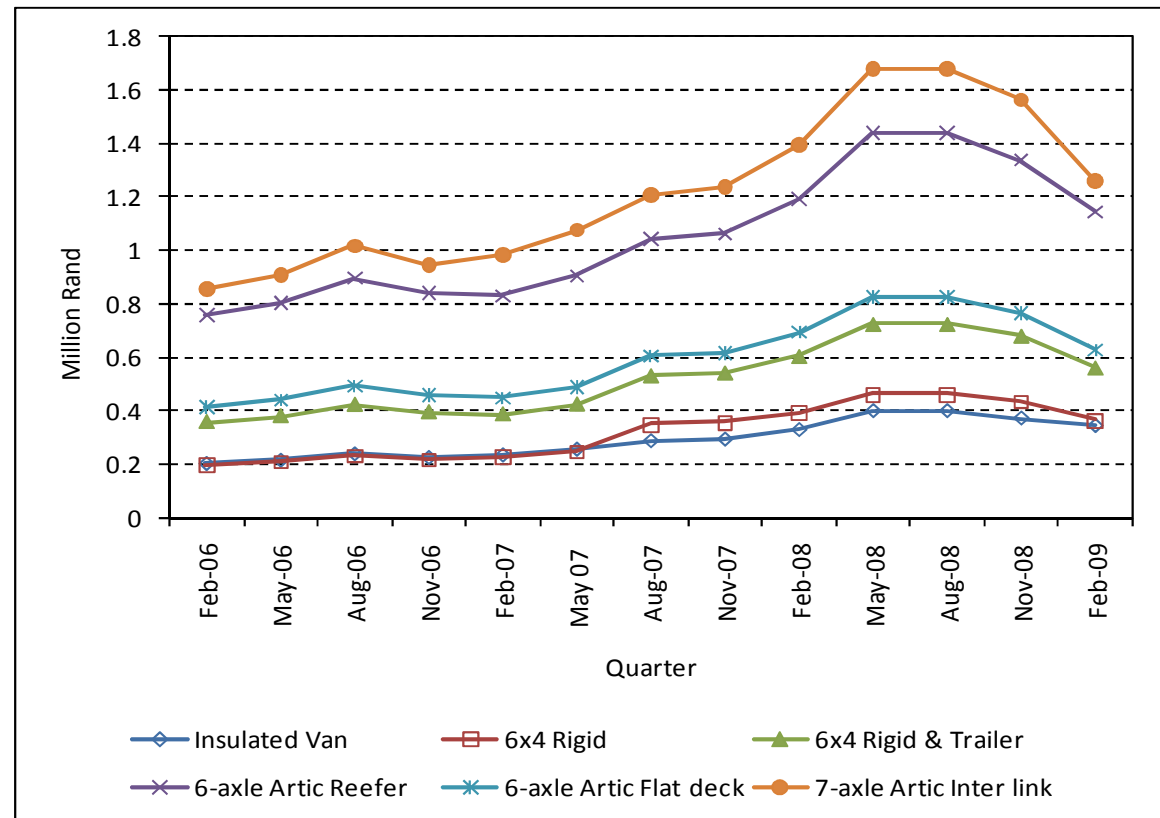
Source: South African Petroleum Industry Association (SAPIA), 2009. GrainSA, 2009.

Transport costs

- New Vehicles: 20%
- Trailers: 3% - 5%
- Load bodies: 15% - 20%
- Fridge Units: 20%
- Maintenance & Repairs: 10% (replacement parts & labour)
- Tyres: 15%
- Driver's Wages: 8 – 11%

Source: Braun, 2009

Annual total variable cost of truck operations from February 2006 to February 2009



Source: FleetWatch - market related truck operating benchmarks (February 2009)

Thank you
