

## **Pear Shipments** **Markets: Far East, Middle** **East, Africa & Indian Ocean** **Islands**

This Newsletter is supported by



### **Information supplied:**

**Latest Industry Crop estimates**  
**Industry Shipments up to Week 21**

#### **Please note:**

1. Cumulative shipment volume is indicated on the right hand axis.
2. Weekly shipment volume is indicated on the left hand axis.

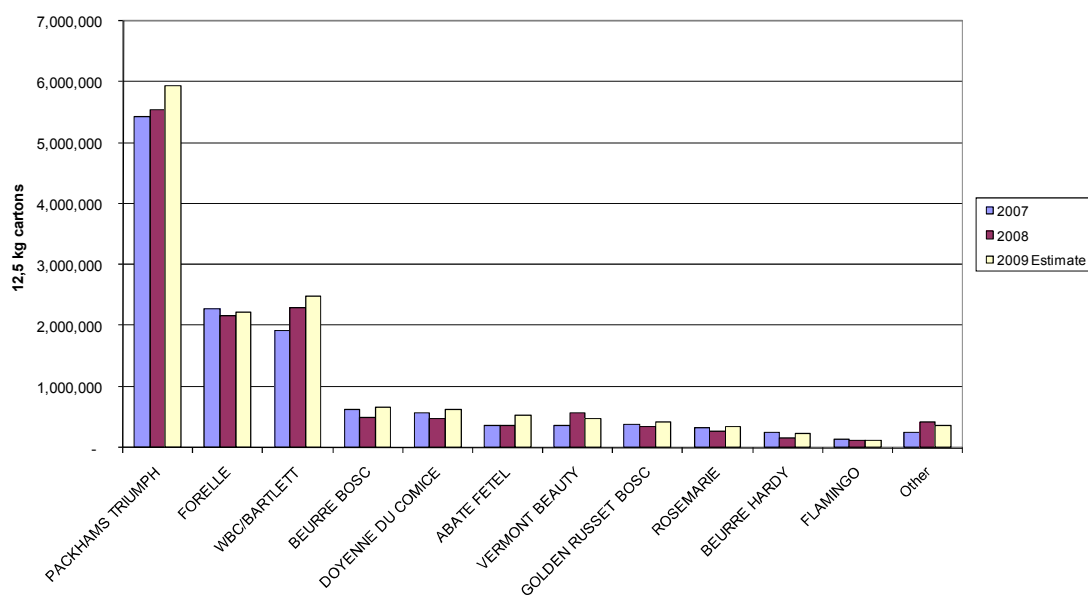
**Issued by Pome Joint Marketing Forum**  
**(Stefan Conradie Office: 021-870 2923 or Cell: 083 264 7101)**  
**Compiled by Optimal Agricultural Business Systems (OABS)**  
**(Jacques du Preez Tel: 021-870 2900)**  
**In co-operation with PPECB, Paltrack, Farsoft, MJIT, Dipar, RBR,**  
**Fruitways**

# Total Pear Export Estimate to All Markets

	2007	2008	2 yr Avg	2009 Estimate	Estimate vs 2008	
Apples	23,742,087	26,488,401	25,115,244	24,058,173	-9%	-2,430,228
Pears	12,912,087	13,138,471	13,025,279	14,367,905	9%	1,229,434
Total	36,654,174	39,626,872	38,140,523	38,426,077	-3%	-1,200,795

All volumes = 12.5kg carton equivalent

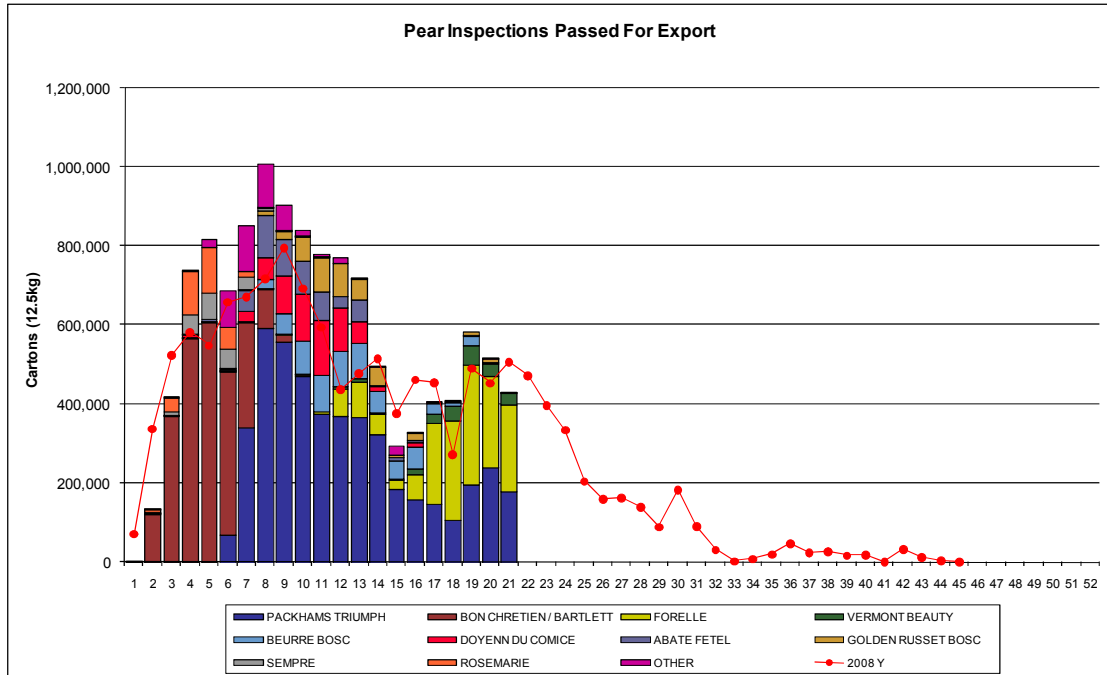
Pears Passed for Export & Estimate



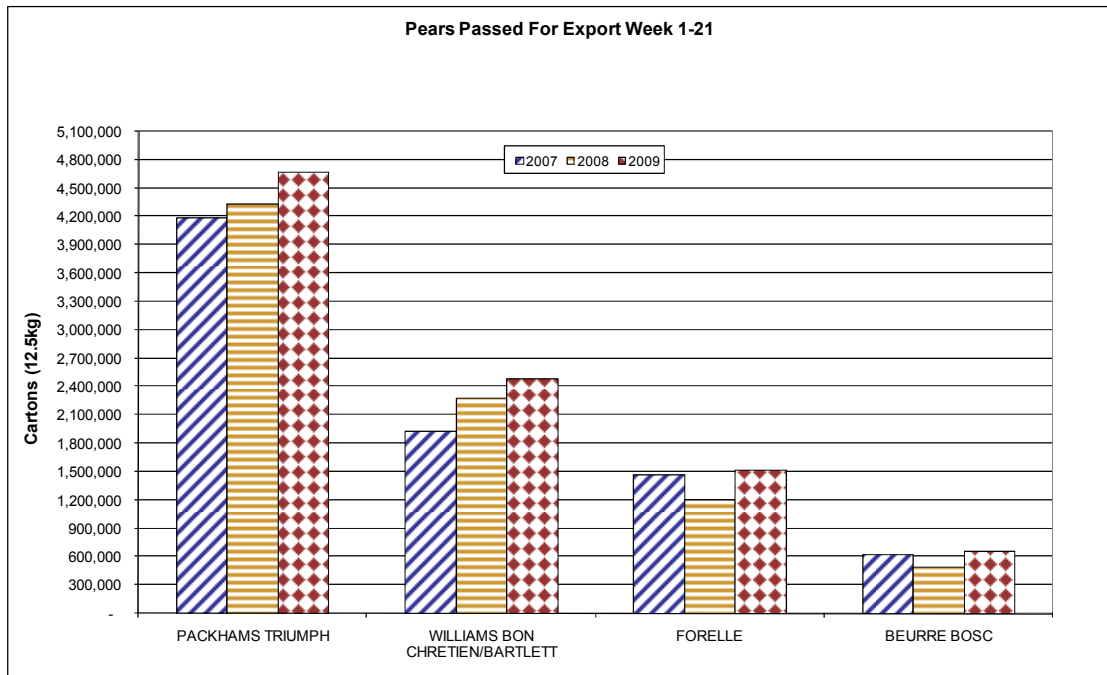
Variety	2007	2008	2 yr Average	2009 Estimate	Estimate vs 2008	
PACKHAMS TRIUMPH	5,422,078	5,545,359	5,483,719	5,924,495	7%	379,136
FORELLE	2,271,454	2,164,702	2,218,078	2,217,391	2%	52,689
WBC/BARTLETT	1,920,236	2,281,917	2,101,077	2,481,724	9%	199,807
BEURRE BOSC	623,759	484,714	554,237	658,670	36%	173,956
DOYENNE DU COMICE	568,443	477,833	523,138	625,931	31%	148,098
ABATE FETEL	355,601	348,230	351,916	526,478	51%	178,248
VERMONT BEAUTY	361,352	565,879	463,615	478,547	-15%	-87,332
GOLDEN RUSSET BOSC	369,621	332,799	345,256	421,245	27%	88,446
ROSEMARIE	313,105	255,634	284,370	337,621	32%	81,986
BEURRE HARDY	243,817	149,788	196,803	216,688	45%	66,899
FLAMINGO	129,020	111,953	120,487	117,097	5%	5,143
Other	242,810	419,662	331,236	362,019	-14%	-57,643
Grand Total	12,912,087	13,138,471	12,973,930	14,367,905	9%	1,229,434

All volumes = 12.5kg carton equivalent

# Pears Passed For Export



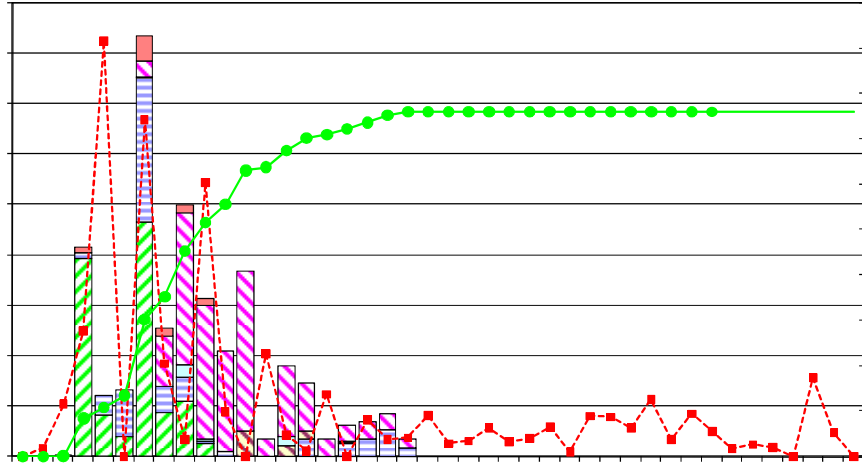
# Pears Passed For Export per cultivar Week 1-21



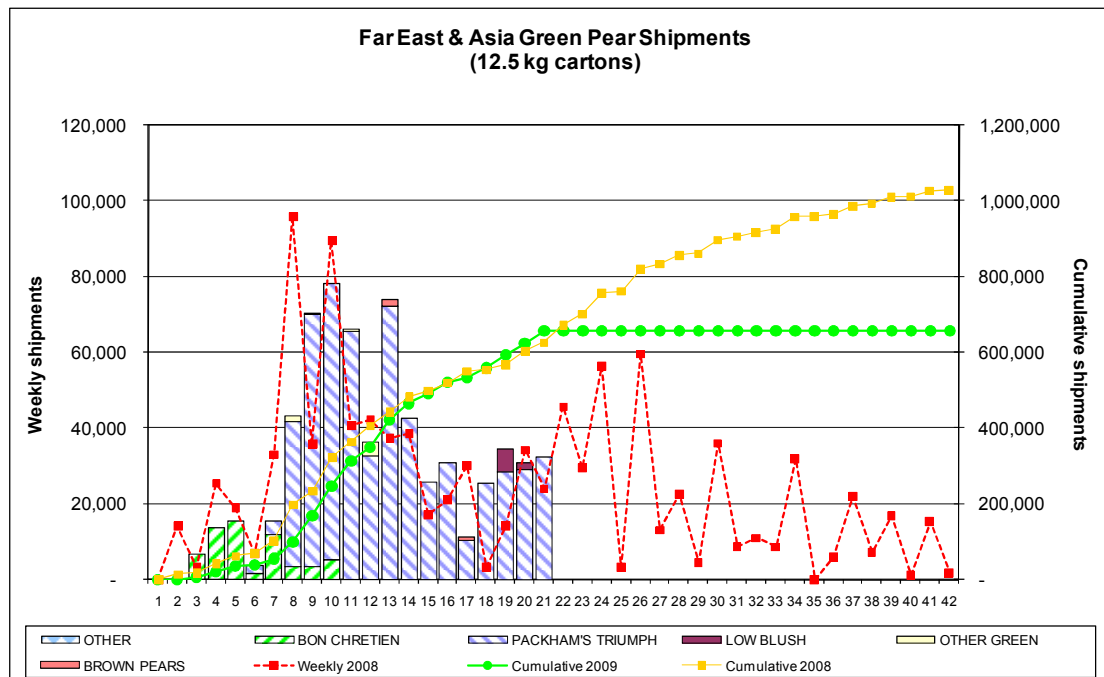
---

# Middle East Market: Pear Shipments

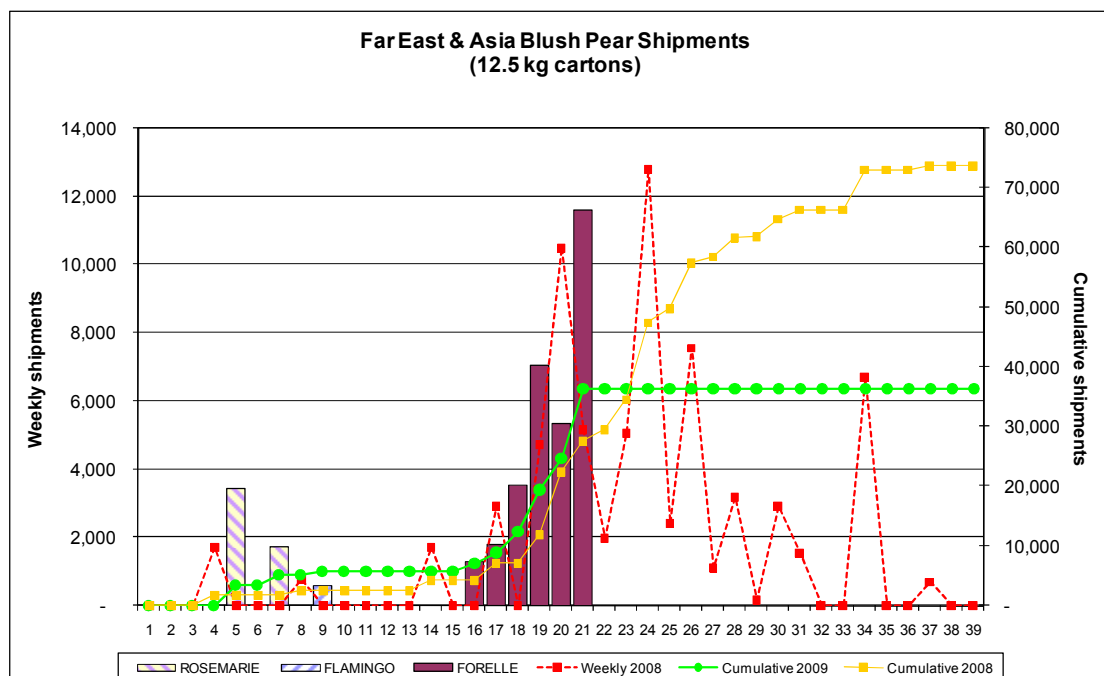
---



# Far East & Asia Market: Pear Shipments



Weekly volumes	2008	2009	Difference	
Week 21	23,994	32,508	8,514	35%
<b>Cumulative volumes</b>				
Week 1 to 21	626,300	657,808	31,508	5%

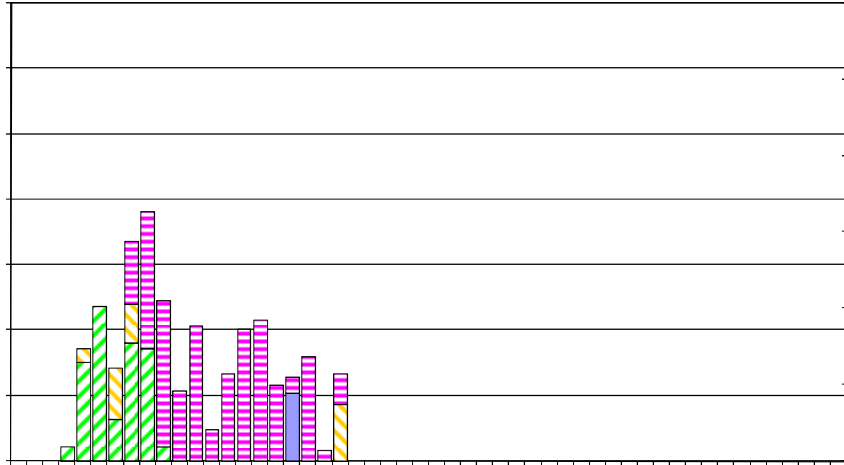


Weekly volumes	2008	2009	Difference	
Week 21	5,160	11,610	6,450	125%
<b>Cumulative volumes</b>				
Week 1 to 21	27,520	36,378	8,858	32%

---

## Africa Market: Pear Shipments

---





---

## Total Pear Shipments Weeks 1-21

---

MARKET	BLUSH PEARS	GREEN PEARS	RED PEARS	OTHER	TOTAL
Africa	1,806	60,084		258	<b>62,148</b>
EU	1,172,941	6,698,877		5,762	<b>7,877,579</b>
FE & Asia	36,378	657,808			<b>694,186</b>
Indian Ocean Island	3,182	109,262			<b>112,444</b>
Middle East	76,486	380,017	1,720		<b>458,223</b>
USA & Canada	15,652	153,252			<b>168,904</b>
United Kingdom	228,502	1,576,124		172	<b>1,804,798</b>
<b>TOTAL</b>	<b>1,534,947</b>	<b>9,635,424</b>	<b>1,720</b>	<b>6,192</b>	<b>11,178,283</b>