



National Agricultural
Marketing Council
Promoting market access for South African agriculture

Markets and Economic Research Centre



Farm-to-Retail-Price-Spread

Quarter 2: May - July 2020

Issue: August 2020

FARM-TO-RETAIL-PRICE-SPREAD

August 2020

EXECUTIVE SUMMARY

The farm value share is the value of the farm product's equivalent in the final food product purchased by the consumers. The Farm-to-Retail-Price-Spread (FTRPS) is the difference between what the consumer pays for the food product at retail level and the value of the farm product used in that product. Price spreads measure the aggregate contributions of food manufacturing, distribution, wholesale and retail firms that transform farm commodities into final products:

- **Poultry:** During the first quarter of 2020 (May 2020 – July 2020), the real FTRPS of fresh whole chicken increased on average by 59.88%. During the same period, the real farm value share of fresh whole chicken decreased by 26.67%. The real farm value share of fresh whole chicken reached 35.91% in July 2020. From July 2019 to July 2020, year-on-year, real FTRPS increased by 81.39%, while the real farm value share decreased by 34.05%.
- **Beef:** The real FTRPS of class A2/A3 beef decreased by 7.08% during the second quarter of 2020 (May 2020 – July 2020) to reach R43.44/kg in July 2020. The real farm value share of beef increased by 3.07% during the second quarter and reached 46.30% in July 2020. From July 2019 to July 2020, year-on-year, the real FTRPS increased by 21.31%, while the real farm value share decreased by 11.95%.
- **Lamb:** The real FTRPS of class A2/A3 lamb decreased by 13.46% from May 2020 to July 2020 to reach R68.29/kg in July 2020. The real farm value share increased by 11.92%, on average, from May to July 2020 to reach 52.07% in July 2020. From July 2019 to July 2020, year-on-year, real FTRPS and the real farm value share increased 12.81% and 3.12%, respectively.
- **Pork:** The real farm value share increased by 20.64%, on average, to reach 31.28% in July 2020. The real FTRPS of pork decreased by 12.5% from R52.25/kg in May 2020 to R45.72/kg in July 2020. From July 2019 to July 2020, year-on-year, the real FTRPS increased by 3.27%, while the real farm value share decreased by 12.52%.
- **Milk:** The real FTRPS for full cream milk decreased by 5.97% from R9.93/l to R9.34/l, during the second quarter (May 2020 – July 2020). The real farm value share increased, on average, by 10.81%, during the second quarter. From July 2019 to July 2020, year-on-year, the real farm value share and the real FTRPS increased by 5.42% and 1.61%, respectively.
- **Maize:** The real FTRPS of super maize meal (converted to a price per ton) decreased by 20.86% from R3 857.87/ton in May 2020 to R3 053.16/ton in July 2020. The real farm value share of super maize meal (5kg) increased by 14.32% from 48.62% in May 2020 to 55.58% in July 2020. From July 2019 to July 2020, year-on-year, the real FTRPS and the real farm value share increased by 3.48% and 0.86%, respectively.
- **Wheat:** In July 2020, the real farm value share for white and brown bread reached 18.82% and 18.61%, respectively. The real FTRPS for white bread (converted to a price per ton) reached R22 410.49/ton of flour in July 2020, with brown bread reaching R21 316.38/ton of flour. From July 2019 to July 2020, year-on-year, real FTRPS for white and brown bread increased by 4.66% and 1.59%, respectively. During the same period, real farm value share for brown and white bread increased by 5.99% and 3.41%, respectively.

Table of Contents

1. Introduction and Overview.....	1
2. Background.....	1
3. Data Collection.....	1
4. Methodology and Definition.....	2
5. Findings: Price Trends, Farm Values and Price Spreads.....	4

1. Introduction and Overview

The Farm-to-Retail-Price-Spread (FTRPS) is the difference between the farm price and the retail price of food, reflecting charges for processing, shipping, and retailing farm goods (also called the marketing spread).

This publication attempts to provide more insight into the factors driving commodity and food price margins. The purpose of this publication is to reflect on food price spreads during the second quarter 2020 (May - July 2020).

NAMC compares prices paid by consumers for food with prices received by farmers for corresponding commodities, analyses this data set, and reports these comparisons for a variety of foods sold through retail food stores such as supermarkets and hypermarkets. The retail costs of these foods are compared with the prices received by farmers for the corresponding agricultural commodities.

The margin between farm gate prices and the price the consumer pays for selected food items is a topic that is frequently debated. In order to better understand the difference between farm gate and retail prices, farm values of selected products and the FTRPS are calculated.

2. Background

Food processors, manufacturers, wholesalers, retailers, and foodservice providers transform raw agricultural commodities into convenient food products for consumers to buy. Transportation, processing, and packaging are among the many marketing services provided. Value added to commodities through marketing services accounts for a substantial portion of consumer food prices.

NAMC's goal is to inform policymakers, agriculture, and the general public about the value added to agricultural commodities by the food marketing system.

FTRPS may increase or decrease over time with changes in the mix and prices of services required to transform raw agricultural commodities into consumer food products. Long-term trends therefore reflect a variety of underlying economic conditions, including changes in the technology used to process and distribute food as well as changes in the price of inputs, such as labour and energy.

3. Data Collection

Urban food prices are obtained from Statistics South Africa (Stats SA). The prices obtained are regarded as being representative of changes in food prices in South Africa for the following reasons:

Stats SA price data on all products are sampled from approximately 1 800 different data collection points across the country on a monthly basis. Food price data is not collected from all the data collection points since some stores that are sampled do not necessarily sell food. In addition, certain food prices are not sampled in all provinces. Food price data collection by Stats SA also involves fieldwork where price collectors visit stores to collect data, after which such data undergoes a rigorous process to ensure its integrity. The basket of food products included was derived from the Living Conditions Survey of 2014/15 compiled by Stats SA to ensure that the basket is representative of consumer spending on food. For more detailed information on the methodological process involved in the collection of prices visit the Stats SA website: <http://www.StatsSA.gov.za/>.

4. Methodology and Definition

The formulas behind this data series consists of four parts (Food Price Monitoring Committee report, 2003):

- **The farm value** is the value of the farm product's equivalent in the final food product purchased by the consumers.
- **The retail value** is the price or the value of a given product at the retail level of a given commodity value chain.
- **The farm-to-retail-price-spread (FTRPS)** is then calculated by the difference between the retail value and the farm value.
- **The farm value share** is then calculated by the growth between the retail value and the farm value.

a) Wheat-to-bread margins (white and brown)

The different prices in the four main levels in the value chain are: the average producer price that the farmer receives as reported by South African Future Exchange (SAFEX); the mill door price; the bakers' wholesale price; and the consumer price. However, in this exercise only the average producer price and the consumer price will be utilised. The calculations are based on the following assumptions:

- The **producer price** (also known as the **farm gate price**) is derived from the SAFEX spot price minus the average transport differential and the handling costs.
- The transport costs from the farm gate to the silo are calculated as the average SAFEX transport differential to all the major maize silos.
- The handling costs are based on responses from millers about their estimated average handling costs and the storage day tariffs per ton. The input from the millers is therefore crucial in this case.
- It is assumed that the millers are closer to the silos than the farmers.
- There is an approximate four-month time lag between the monthly average SAFEX spot price and the average monthly retail price.
- The cost of bread flour between the milling and baking divisions can be neglected, as this is an internal transfer within the group and not determined by market forces. Thus, to determine the cost of production of bread there is no separate margin for the milling and baking divisions.
- The extraction rates between brown and white bread differ. The extraction rate from 1 ton of wheat is 0.87 tons of brown bread flour and 0.8 tons of white bread flour. Assuming that 447 grams of flour per standard 700g loaf is used, 2 095 brown loaves can be baked per ton of flour. Similarly, if 509 grams of flour per standard 700g loaf is used, 1 966 white loaves can be baked per ton of flour.

Farm value is calculated by dividing the farm gate price by the respective extraction rates namely, 0.8 for white bread and 0.87 for brown bread respectively.

Retail value is calculated by multiplying the price of white and brown bread by the number of loaves that 1 ton of flour produces, i.e. 2 095 for brown bread and 1 996 for white bread, respectively.

The **farm value share** is the proportion farmers receive from the amount consumers spend on the basket of food purchased in retail grocery stores. This is equal to farm value divided by the retail value.

The **producer price** of wheat is therefore calculated by taking the SAFEX price, subtracting the farmers' transport cost to the silo, as well as the handling and storage costs.

b) Maize-to-maize-meal margins (super and special)

The prices of the four main nodes in the maize chain are: the average producer price; the mill door price; the list price; and the consumer price. In this case, only the average producer prices and retail prices will

be utilised to estimate the farm value, farm-to-retail-price-spread, retail value and farm value share. The calculations of these items are based on the assumptions that:

- The **producer price** (also known as the **farm gate price**) is derived from the SAFEX spot price minus the average transport differential and the handling costs. The transport costs from the farm gate to the silo are calculated as the average SAFEX transport differential to all the major maize silos. The transport differential has changed since roads have become a major participant to be included into the calculation of the differential. The adjustment based on ratio/percentage of rails and roads have been used to calculate the location differentials. The handling costs are based on responses from millers about the estimated average handling costs and the storage day tariffs, per ton. The input from the millers is therefore crucial in this case.
- It is assumed that the millers are located closer to the silos than the farmers.
- There is an approximate four-month time lag between the average monthly SAFEX spot price and the average monthly retail price.
- Specific mill site costs are only available on an annual basis. Therefore, the monthly mill site costs are kept constant for a one-year cycle.

Table 1 below provides a summary of the extraction rates of the various types of maize meal, as sourced from the National Chamber of Milling (NCM). It is essential to make a distinction between the various types of maize meal due to their different extraction rates, which influence the margins and spread of the millers significantly. More than 40% of all the maize meal sold in the South African market is super maize meal, and this percentage is increasing. Special maize meal sales contribute 30% of total maize meal sales. Although an extraction rate of 62.5% is reported for super maize meal, some industry specialists regard this value as “conservative”. The best-selling super maize meal brands, IWISA and ACE, only have a 55% extraction rate.

Table 1: Extraction rate of various maize meal types

Type	Extraction rate
Super	62.5%
Special	78.7%
Sifted	88.7%
Un-sifted	98.7%

The farm value for one-ton super maize meal is calculated by dividing the farm gate price by the average extraction rate (62.5% for super maize meal). This implies that one ton of super maize meal can be produced from 1.6 tons of raw white maize.

The retail value for one-ton of super maize meal is calculated by multiplying the retail price (R/specific size) by 1 000/that specific size. For example, conversion for 5kg bag of maize meal (R20/bag) is calculated by multiplying 20 by 1 000/5 = (200). This is equal to R4 000/ton.

Farm-to-retail-price-spread is the difference between farm value and retail value (farm value minus retail value).

The farm value share is the proportion farmers get from the amount consumers spend on the market basket of food purchased in retail grocery stores. This is equal to farm value divided by retail value.

c) Beef margins

The first assumption relates to the average slaughtering weight of one head of cattle, which is equivalent to 220kg. Of the 220kg: 42.24kg consist of parts, which do not form part of any direct food related items, and include off-cuts, fat, kidneys and bones. The second assumption relates to the allocation of certain weights to different meat cuts out from a 220kg carcass. Rump steaks are allocated a weight of 2.47%, T- bone 3.64%; mince 11.36%, stew 31.82%, chuck 18.02%, sirloin 2.15%, fillet 1.15% and brisket 7.54%. Stats SA included additional cut prices from January 2017, including stew and offal, of which stew will be included in calculating the spread between farm and retail levels.

The **farm value** of beef is therefore calculated by firstly determining the average weight of the specific cut in question. This would mean that from a 220kg carcass weight, +/-78.2% is made up by cuts specified above. To calculate the farm value, the weight of the cut is multiplied by the weighted average monthly slaughter price of A2/A3 quality beef (per kg). **The retail value** of a selected cut is then calculated by multiplying its price (R/kg) by its weight. The total retail value of these eight cuts combined is then obtained by summing up the specific retail values.

Farm-to-retail-price-spread is the difference between farm value and retail value (farm value minus retail value).

The farm value share is the proportion farmers receive from the amount consumers spend on the market basket of food purchased in retail grocery stores. This is equal to farm value divide by the retail value.

d) Lamb margins

The average slaughtering weight of a lamb carcass is equivalent to 20kg. Parts include off-cuts, fat, kidneys and bones, which do not form part of any direct food related items. The second assumption relates to the allocation of certain weights to the different meat cuts from a 20kg carcass. These include: leg 25.6%, loin and saddle chops 29.9%, neck 3.4%, rib chops 9.5% and stew 18.2%.

The **farm value** of lamb is therefore calculated by firstly determining the average weight of the specific cut in question. To calculate the farm value, the weight of the cut is multiplied by the weighted average monthly slaughter price of A2/A3 quality lamb (per kg). **The retail value** of a selected cut is then calculated by multiplying its price (R/kg) by its weight. The total retail value of these five cuts combined is then obtained by summing up the specific retail values.

Farm-to-retail-price-spread is the difference between farm value and retail value (farm value minus retail value).

The farm value share is the proportion farmers receive from the amount consumers spend on the market basket of food purchased in retail grocery stores. This is equal to farm value divided by retail value.

5. Findings: Price Trends, Farm Values and Price Spreads

- **Poultry:** During the first quarter of 2020 (May 2020 – July 2020), the real FTRPS of fresh whole chicken increased on average by 59.88%. During the same period, the real farm value share of fresh whole chicken decreased by 26.67%. The real farm value share of fresh whole chicken reached 35.91% in July 2020. From July 2019 to July 2020, year-on-year, real FTRPS increased by 81.39%, while the real farm value share decreased by 34.05%. See **Figure 1** below.

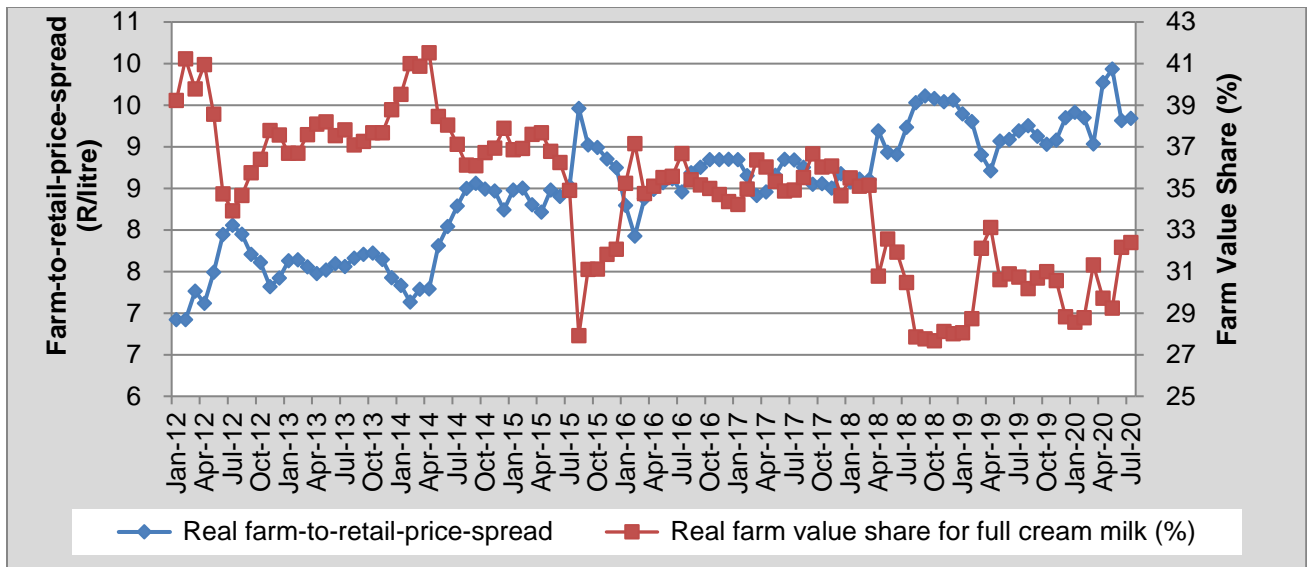


Figure 1: Real farm-to-retail-price-spread and farm value share of poultry

Source: Stats SA, 2020; AMT, 2020 and own calculations

- Beef:** Due to the inclusion of additional products in the new CPI basket (beef stew and offal) from January 2017, annual comparisons are possible for beef retail prices. The FTRPS of Beef will therefore include additional cuts, i.e. sirloin, stew and fillet, in the calculation of the spread from January 2017 onwards, but will exclude beef offal in the calculation of the spread.

The real FTRPS of class A2/A3 beef decreased by 7.08% during the second quarter of 2020 (May 2020 – July 2020) to reach R43.44/kg in July 2020. The real farm value share of beef increased by 3.07% during the second quarter and reached 46.30% in July 2020. From July 2019 to July 2020, year-on-year, the real FTRPS increased by 21.31%, while the real farm value share decreased by 11.95%. See **Figure 2** below.

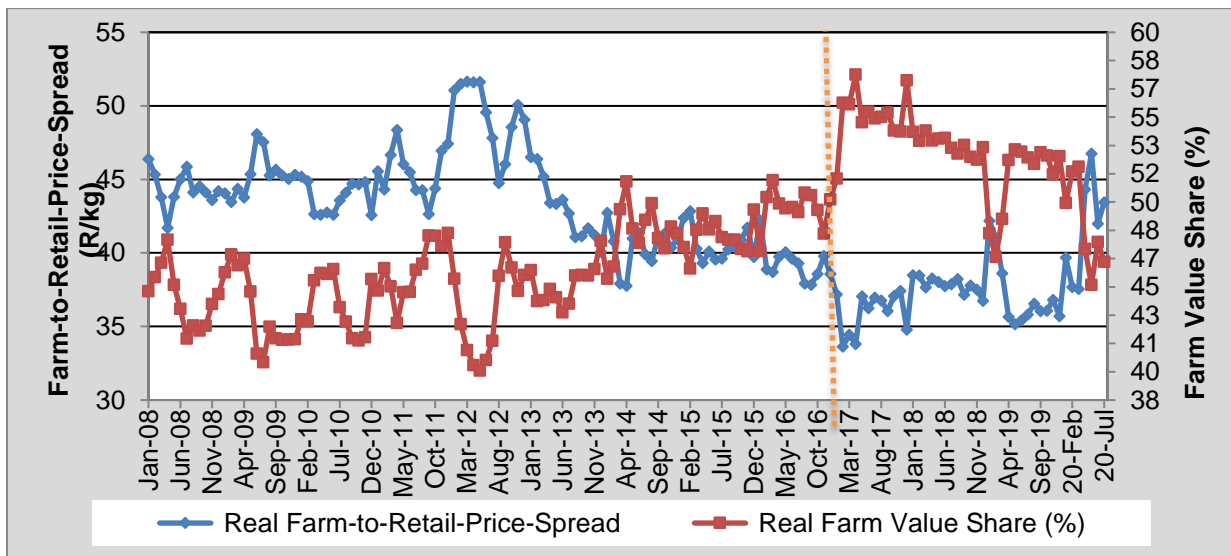


Figure 2: Real farm-to-retail-price-spread and farm value share for beef

Source: Stats SA, 2020 AMT, 2020 and own calculations

- Lamb:** Due to the inclusion of additional products in the new CPI basket (lamb stew and offal) from January 2017, annual comparisons are possible for lamb retail prices. The new FTRPS of Lamb will therefore include leg, loin chops (saddle chops), neck, rib chops and stew, but will exclude lamb offal in the calculation of the spread.

The real FTRPS of class A2/A3 lamb decreased by 13.46% from May 2020 to July 2020 to reach R68.29/kg in July 2020. The real farm value share increased by 11.92%, on average, from May to July 2020 to reach 52.07% in July 2020. From July 2019 to July 2020, year-on-year, real FTRPS and the real farm value share increased 12.81% and 3.12%, respectively. See **Figure 3** below.

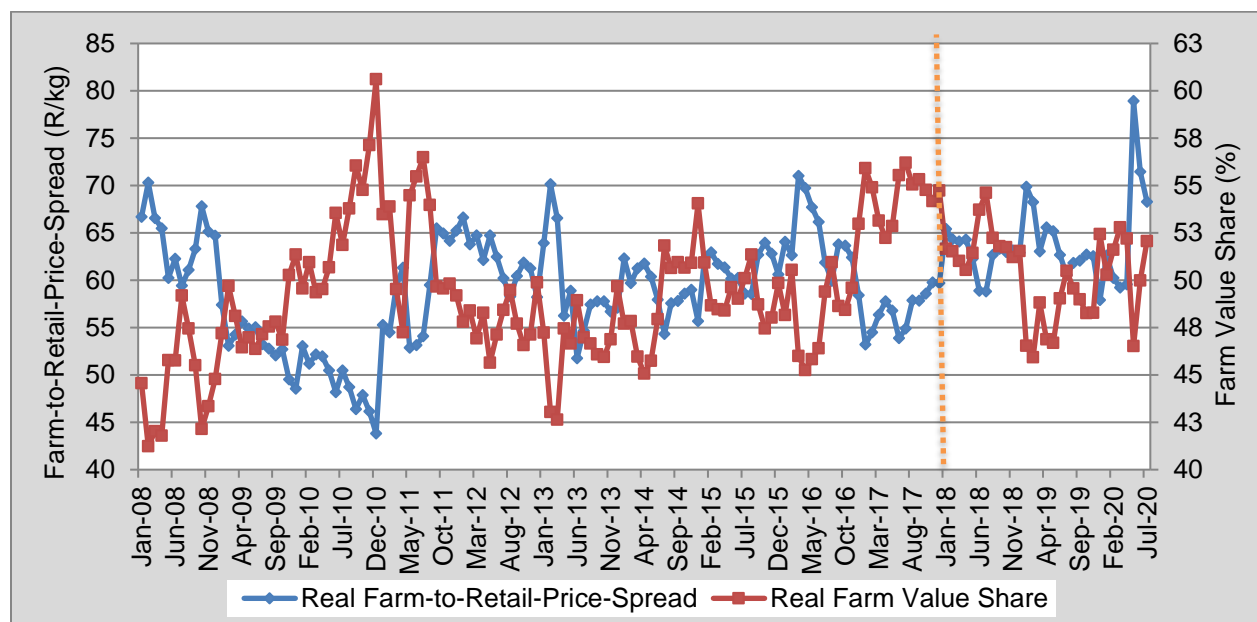


Figure 3: Real farm-to-retail-price-spread and farm value share of lamb
 Source: Stats SA, 2020; AMT, 2020 and own calculations

- Pork:** Due to the inclusion of additional of products in the new CPI basket (pork ribs) from January 2013, annual comparisons can now be made for pork retail prices. The new FTRPS of pork will therefore include the pork ribs effective January 2013.

The real farm value share increased by 20.64%, on average, to reach 31.28% in July 2020. The real FTRPS of pork decreased by 12.5% from R52.25/kg in May 2020 to R45.72/kg in July 2020. From July 2019 to July 2020, year-on-year, the real FTRPS increased by 3.27%, while the real farm value share decreased by 12.52%. See **Figure 4** below.

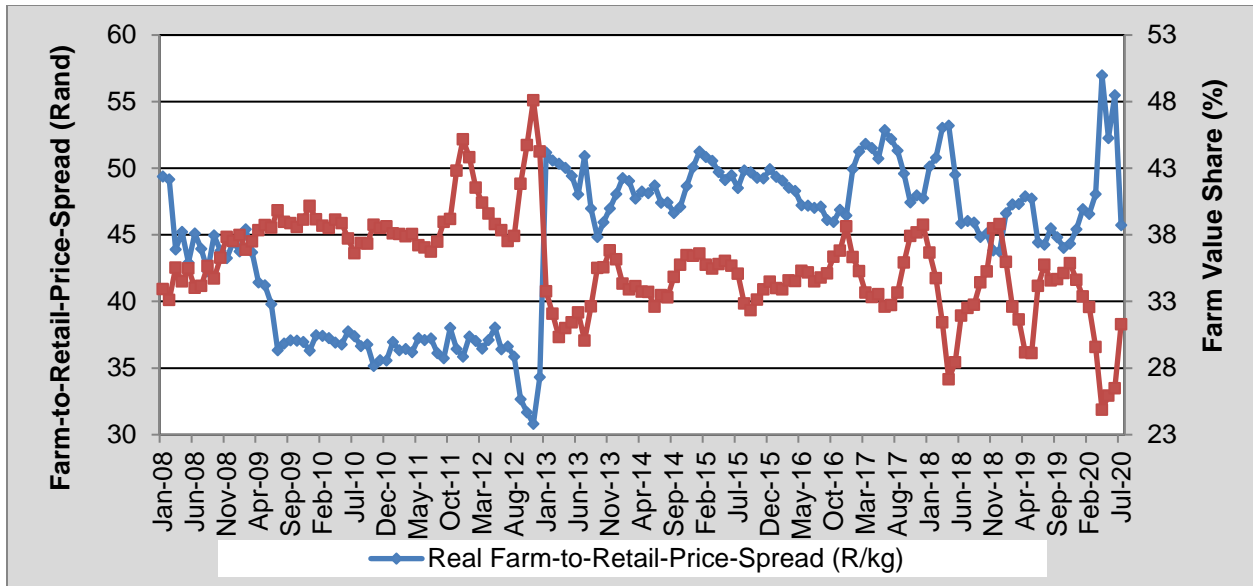


Figure 4: Real farm-to-retail-price-spread and farm value share of pork
 Source: Stats SA, 2020; AMT, 2020 and own calculations

- **Milk:** The real FTRPS for full cream milk decreased by 5.97% from R9.93/ℓ to R9.34/ℓ, during the second quarter (May 2020 – July 2020). The real farm value share increased, on average, by 10.81%, during the second quarter. From July 2019 to July 2020, year-on-year, the real farm value share and the real FTRPS increased by 5.42% and 1.61%, respectively. See **Figure 5** below.

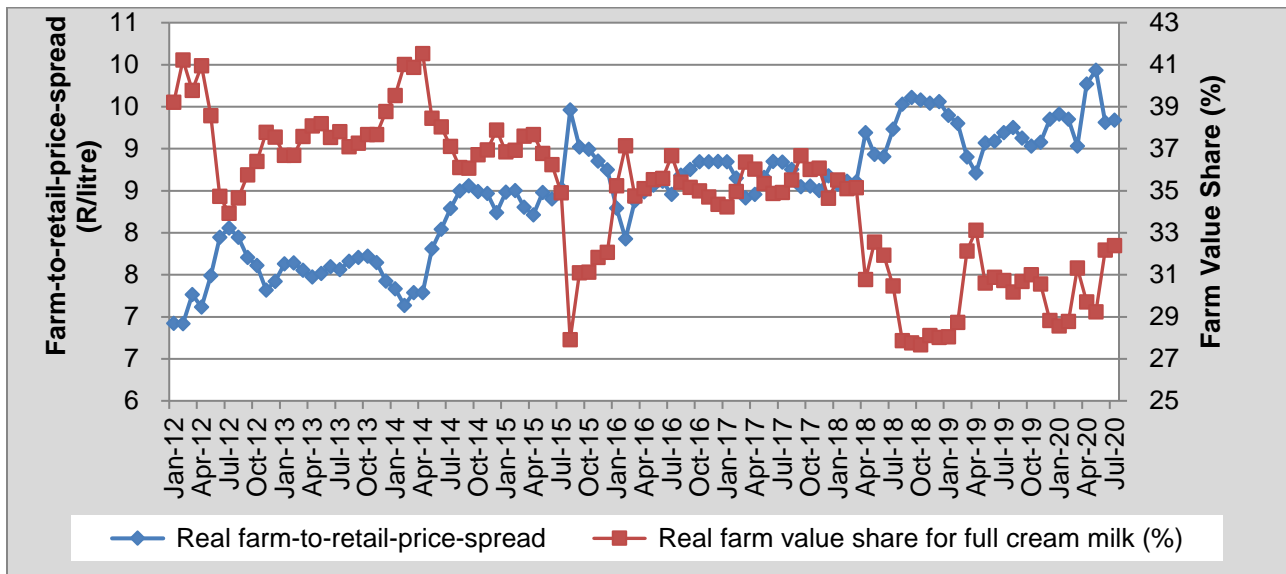


Figure 5: Real farm-to-retail-price-spread and farm value share of milk
 Source: Stats SA, 2020; AMT, 2020 and own calculations

- **Maize:** Due to data limitations for the monitoring of an average retail price for special maize meal (5kg) by Stats SA for the period February 2015 to December 2016, this section will only include the spread for super maize meal (5kg).

The real FTRPS of super maize meal (converted to a price per ton) decreased by 20.86% from R3 857.87/ton in May 2020 to R3 053.16/ton in July 2020. The real farm value share of super maize meal (5kg) increased by 14.32% from 48.62% in May 2020 to 55.58% in July 2020. From July 2019 to July 2020, year-on-year, the real FTRPS and the real farm value share increased by 3.48% and 0.86%, respectively. See **Figure 6** below.

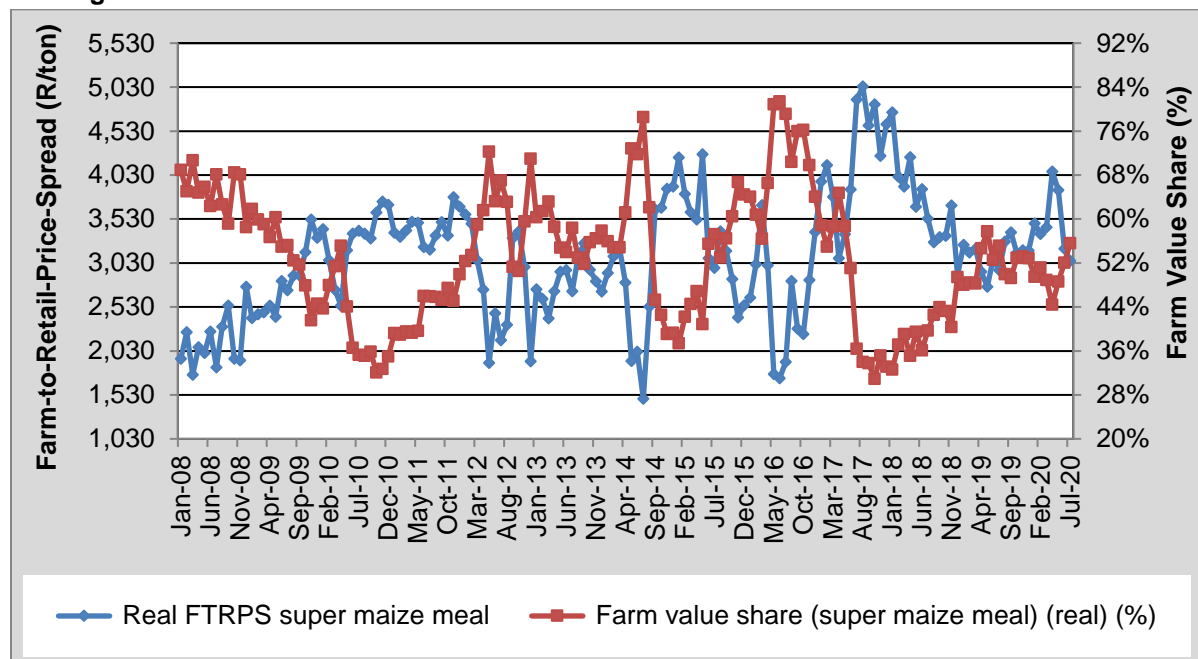


Figure 6: Real farm-to-retail-price-spread and farm value share of super maize meal 5kg
Source: Stats SA, 2020; AMT, 2020 and own calculations

- Wheat:** In July 2020, the real farm value share for white and brown bread reached 18.82% and 18.61%, respectively. The real FTRPS for white bread (converted to a price per ton) reached R22 410.49/ton of flour in July 2020, with brown bread reaching R21 316.38/ton of flour. From July 2019 to July 2020, year-on-year, real FTRPS for white and brown bread increased by 4.66% and 1.59%, respectively. During the same period, real farm value share for brown and white bread increased by 5.99% and 3.41%, respectively. See **Figure 7** below.

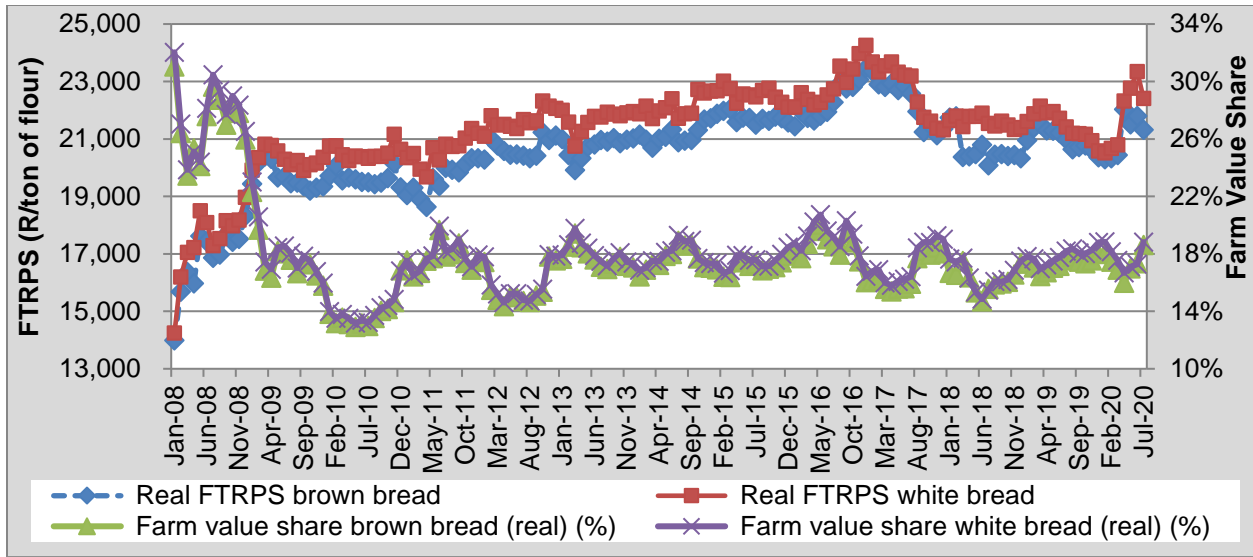


Figure 7: Real farm-to-retail-price-spread and farm value share of wheat

Source: Stats SA, 2020; AMT, 2020 and own calculations

Compiled by:

Price trends and discussion on selected topics:

Fezeka Matebeni

Corné Dempers

Thabile Nkunjana

Enquiries: Christo Joubert: +27 12 341-1115 or christo@namc.co.za

Stats SA is acknowledged for assistance provided to the NAMC in terms of food price data.

© 2020. Published by the National Agricultural Marketing Council (NAMC).

Disclaimer:

Information contained in this document results from research funded wholly or in part by the NAMC acting in good faith. Opinions, attitudes and points of view expressed herein do not necessarily reflect the official position or policies of the NAMC. The NAMC makes no claims, promises, or guarantees about the accuracy, completeness, or adequacy of the contents of this document and expressly disclaims liability for errors and omissions regarding the content thereof. No warranty of any kind, implied, expressed, or statutory, including but not limited to the warranties of non-infringement of third-party rights, title, merchantability, fitness for a particular purpose or freedom from computer virus is given with respect to the contents of this document in hardcopy, electronic format or electronic links thereto. Reference made to any specific product, process, and service by trade name, trade mark, manufacturer or another commercial commodity or entity are for informational purposes only and do not constitute or imply approval, endorsement or favouring by the NAMC.